

Aide-Mémoire

Key responsibilities for delegations

Date due to MO:	26 February 2024	Action required by:	N/A
Security level:	IN CONFIDENCE	Health Report number:	H2024036176
To:	Hon Casey Costello, Associate Minister of Health		
Consulted:	Health New Zealand: <input checked="" type="checkbox"/> Māori Health Authority: <input type="checkbox"/>		

Contact for telephone discussion

Name	Position	Telephone
Maree Roberts	Deputy Director-General, Strategy, Policy and Legislation	s 9(2)(a)
Andrew Old	Deputy Director-General, Public Health Agency	s 9(2)(a)
Dr Joe Bourne	Chief Medical Officer, Clinical, Community and Mental Health	s 9(2)(a)

Aide-Mémoire

Key responsibilities for delegations

Date due:	26 February 2024		
To:	Hon Casey Costello, Associate Minister of Health		
Security level:	IN CONFIDENCE	Health Report number:	H2024036176

Details of meeting: 26 February 2024; 3.30 – 4.15pm
Health Officials Meeting with Associate Minister of Health, Hon Casey Costello

Purpose of meeting: This information will support an agenda item for the weekly meeting with Health Officials, providing an overview of key responsibilities for Minister Costello's delegations.

Delegations for Minister Costello

1.1 Women's Health

Deputy Director-General	Maree Roberts, Strategy Policy and Legislation
Key Responsibilities	<ul style="list-style-type: none"> • Maternity and early years (see below) • Sexual and reproductive health • Abortion • Surrogacy • Regulation of medicines and medical devices that women use • Family violence and sexual violence • Supporting women to age well.
Upcoming Milestones and decisions	<p>The Improving Arrangement for Surrogacy Bill is before the Health Committee. The Bill is being led by the Ministry of Justice, with multi-agency support.</p> <p>The Government has committed to repeal the Therapeutic Products Act, and the Ministry has prepared a draft cabinet paper to progress this (H2024035378 refers). This paper seeks Cabinet's agreement for new policy work to be done to regulate medicines and medical devices, including medical products used by women, such as medical products that are predominately used by women, for example long action reversible contraception.</p>
Risks and Issues	The Women's Health Strategy was published in July 2023. There is likely to be high stakeholder expectation that the GPS 2024-2027 and NZHP 2024-2027 includes a focus on women's health.

<p>Key Stakeholders</p>	<p>Workforce groups</p> <ul style="list-style-type: none"> • Royal Australian and NZ College of Obstetricians and Gynaecologists • Ngā Maia Trust Aotearoa • Aotearoa NZ College of Midwives • NZ College of Sexual & Reproductive Health • Family Planning NZ • College of Nurses Aotearoa • Medical Council of New Zealand Māori - Māori Nursing Council of New Zealand • The Royal New Zealand College of General Practitioners • The Royal Australian and New Zealand College of Radiologist • New Zealand Nurses Organisation • Midwifery Council • Pacifika Midwives Aotearoa <p>Research groups</p> <ul style="list-style-type: none"> • Te Tatai Hauora o Hine Centre for Women’s Health Research University of Otago Department of Obstetrics • Gynaecology and Women’s Health • Moana Research • Te Whariki Takapou • Centre for Asian and Ethnic Minority Research • Otago University, Department of Women’s Childrens Health • Dunedin School of Medicine <p>Women’s Advocacy</p> <ul style="list-style-type: none"> • Māori Women’s Welfare League • NZ Women in Medicine • National Council of Women New Zealand • Project Gender • Auckland Women’s Health Council P.A.C.F.I.C.A Inc • Auckland’s Women’s Centre • Women’s Refuge • Rural Women NZ • Shakti NZ • Women’s Health Action • Consumer Advocacy Alliance • Maternity Services Consumer Council • Family Planning New Zealand • Magma Health <p>Condition specific</p> <ul style="list-style-type: none"> • Endometriosis NZ • Perinatal Anxiety and Depression Aotearoa • Talk Peach Gynaecological Foundation • Menopause Collective NZ <p>Cancer</p> <ul style="list-style-type: none"> • Hei Ahuru Mowai Cancer Leadership • Sweet Louise • Breast Cancer Foundation • Cure Our Ovarian Cancer Charitable Trust • Breast Cancer Aotearoa Coalition • Lung Cancer Foundation NZ • Smear Your Mea Trust
--------------------------------	---

<p>Cross over with other sectors / Ministerial portfolios</p>	<ul style="list-style-type: none"> • Cancer • Primary and community health care • Health workforce • Mental Health and Addiction • Housing and homelessness <p>Most health delegations have relevance to women’s health (ie. system enablers of improving women’s health)</p>
--	--

1.2 Maternity Health and 1.3 Perinatal and Maternal Mortality

<p>Deputy Director-General</p>	<p>Maree Roberts, Strategy Policy and Legislation Deborah Woodley, Director Starting Well – Health New Zealand Te Whatu Ora</p>
<p>Key Responsibilities</p>	<p>We note that this information also includes your (presumed) delegation for early years (including Plunket).</p> <p>Responsibilities include:</p> <ul style="list-style-type: none"> • Maternity services and supports • Issues relating to perinatal and maternal mortality • SUDI prevention • Early years supports, including Well Child Tamariki Ora and the Kahu Taurima programme (Kahu Taurima is the approach to maternity and early years (pre-conception to 5 years old, or the First 2,000 Days of life) for all whānau in Aotearoa New Zealand.)
<p>Upcoming Milestones and decisions</p>	<p>Health New Zealand Te Whatu Ora will be providing advice shortly on use of contingency funding relating to Kahu Taurima.</p>
<p>Risks and Issues</p>	<p>While workforce sits outside of your portfolio, the Lead Maternity Carers (LMC) workforce is estimated to be 40% below its full contingent.</p> <p>Funding pressures are a key issue for the sector, driving workforce challenges. There is an upcoming court case between the College of Midwives on behalf of over 1,300 midwives and the Crown over pay and working conditions.</p> <p>There are ongoing access and equity issues around the Well Child Tamariki Ora process, driven by cost pressures, service issues and separation between maternity and early years services- which have led to the need for Kahu Taurima and an integrated maternity and early years whānau support pathway</p>
<p>Key Stakeholders</p>	<p>We will provide you with a more comprehensive list with your Women’s Health and Maternity Briefing.</p> <p>Maternity</p> <ul style="list-style-type: none"> • Ngā Maia Māori Midwives • Midwifery Council – Te Tatau o te Whare Kahu • New Zealand College of Midwives • Royal Australian New Zealand College of Obstetricians and Gynaecologists <p>Early years</p> <ul style="list-style-type: none"> • B4 School Check Providers

	<ul style="list-style-type: none"> • Hāpai te Hauora (Māori Public Health – responsible for National SUDI Prevention Coordination Centre) • 65 Well Child Tamariki Ora providers (including: <ul style="list-style-type: none"> - Whānau Āwhina Plunket which is the largest provider - Hauora Māori Partners including 34 specific partners who are currently delivering Kahu Taurima care. - Pacific Partners including five providers who are also delivering Kahu Taurima care with key focus on outreach and mobile services. <p>Perinatal and maternal mortality</p> <ul style="list-style-type: none"> • Health Quality and Safety Commission, who run the National Mortality Review Committee.
Cross over with other sectors / Ministerial portfolios	<p>Maternity health overlaps with:</p> <ul style="list-style-type: none"> • Workforce; hospital services; Infrastructure; health promotion; immunisation (Minister Reti) • Maternal Mental health (Minister Doocey)

1.4 Surgical Mesh

Deputy Director-General	Robyn Shearer, Clinical, Community and Mental Health
Key Responsibilities	Provide oversight and monitoring to the surgical mesh work programme (Restorative Justice recommended actions, and a pause on mesh use for stress urinary incontinence)
Upcoming Milestones and decisions	Briefing providing an overview of the surgical mesh work programme – February 2024. Deep dive on Surgical Mesh with Dr Joe Bourne, Chief Medical Officer, Ministry of Health – March 2024.
Risks and Issues	<p>There is strong consumer advocacy regarding the use of surgical mesh and high interest in the surgical mesh work programme.</p> <p>Work is underway to achieving the four remaining actions but are at varying stages of completion. Responsible agencies (Health New Zealand, Health Quality and Safety Commission (HQSC), Ministry of Health) are required to consider resourcing of this work against other priorities.</p>
Key Stakeholders	<ul style="list-style-type: none"> • Royal Australian and New Zealand College (RANZCOG) • Royal Australasian College of Surgeons (RACS) • New Zealand and Private Hospitals Association (NZPSHA) • Mesh injured consumers and advocacy groups • Health New Zealand Te Whatu Ora • Māori Health Authority Te Aka Whai Ora • Accident Compensation Commission (ACC) • Health and Disability Commissioner (HDC) • Health Quality and Safety Commission (HQSC).

Cross over with other sectors / Ministerial portfolios	Links with the development of future medicines and medical device legislation and the repeal of the Therapeutic Products Act (which would have included stronger powers to control the use of all medical devices).
---	---

1.5 Sexual and Reproductive Health

Deputy Director-General	<ul style="list-style-type: none"> • Abortion – Maree Roberts, Strategy, Policy and Legislation and Health New Zealand Te Whatu Ora • Assisted reproduction – Health New Zealand Te Whatu Ora • Contraception – Health New Zealand Te Whatu Ora • STBBI Strategy and HIV Action Plan – Andrew Old, Public Health Agency and Health New Zealand Te Whatu Ora • Surveillance – Andrew Old, Public Health Agency
Key Responsibilities	<p>Sexual and reproductive health covers a broad range of topics, including the following key issues:</p> <ul style="list-style-type: none"> • Positive healthy and consensual sexual relationships • Contraception • Pregnancy planning • Access to abortion • Assisted reproduction • Sexually transmitted infections • Population level surveillance and information.
Upcoming Milestones and decisions	<p>You will receive a briefing providing an overview of Sexual and Reproductive Health on 29 February 2024.</p> <p>March 2024 will mark one year since the publication of the Sexually Transmitted and Blood Borne Infection (STBBI) Strategy and HIV Action Plan.</p> <p>The Ministry of Health is currently collating and checking the abortion reporting figures for 2023. They will be available by mid-2024 (date TBC).</p> <p>A quality and consistency review of the Contraceptive Access Programme (CAP) service is underway. A report will be made available later this year (date TBC).</p> <p>Other upcoming dates:</p> <ul style="list-style-type: none"> • HPV Awareness Day – 4 March 2024 • Cervical Screening Awareness Month – 1-30 September 2024 • World Sexual Health Day – 4 September 2024 • World Contraception Day – 26 September 2024 • World Fertility Day – 2 November 2024.

<p>Risks and Issues</p>	<p>Access to abortion</p> <ul style="list-style-type: none"> • Despite law change and increasing availability of Early Medical Abortion rates, barriers to access still exist, particularly for people living in socioeconomically deprived areas. • There is also a lack of specialised training for abortions for gestation over 12 weeks and 6 days. There is a risk that without establishing specialised training, there could be an increasingly restricted service due to workforce constraints. <p>Assisted human reproduction</p> <ul style="list-style-type: none"> • Access to publicly funded fertility services is limited due to funding constraints. <p>Sexually transmitted infections (STIs)</p> <ul style="list-style-type: none"> • There are current gaps in our STI surveillance system due to the requirement to report gonorrhoea, syphilis, and HIV anonymously. Reporting these STIs anonymously is a timely process for clinicians which has resulted in an estimated 50% data completion rate for syphilis, leading to a significant underestimate of the magnitude of the epidemic in New Zealand. The Ministry of Health is planning a review of the list of notifiable diseases which will take those notified anonymously into consideration. • There is a low rate of HPV immunisation in New Zealand, despite it being highly effective at preventing cervical cancer and other cancers caused by HPV infection. <p>Endometriosis</p> <ul style="list-style-type: none"> • Endometriosis is a key health issue that can have a significant impact on reproductive health • There is a common 8-year lag between symptom onset and diagnosis. • There is no cure for endometriosis, current treatment aims to reduce and control symptoms, slow development of disease and improve patients' quality of life.
<p>Key Stakeholders</p>	<p>Reproductive health</p> <ul style="list-style-type: none"> • Sexual Wellbeing Aotearoa (formerly Family Planning New Zealand) • Fertility New Zealand • Endometriosis New Zealand • New Zealand College of Sexual and Reproductive Health (NZCSRH) • New Zealand Sexual Health Society Incorporated (NZSHS) • DECIDE – National Abortion Telehealth Service <p>HIV/AIDs</p> <ul style="list-style-type: none"> • Burnett Foundation (formerly New Zealand AIDS Foundation) • Body Positive Inc • Toitū Te Ao • Positive Women • AIDS Epidemiology Group <p>Cross-issue groups</p> <ul style="list-style-type: none"> • Women's Health Action (WHA) • Aotearoa New Zealand Sex Worker' Collective (NZPC) (formerly the New Zealand Prostitutes' Collective)

Cross over with other sectors / Ministerial portfolios	<p>Links with:</p> <ul style="list-style-type: none"> • Minister Reti’s portfolios of primary care and community care • Minister Seymour’s Pharmac portfolio (contraception) • Minister Stanford’s Education portfolio regarding the relationships and sexuality education learning area in the curriculum • Minister Doocoy’s rainbow health portfolio.
---	--

1.6 COVID-19 Inquiry

Deputy Director-General	<p>Maree Roberts, Strategy Policy and Legislation</p> <p>(Noting DIA has overarching responsibility for the Inquiry, but Strategy, Policy and Legislation coordinate the health aspects of the inquiry)</p>
Key Responsibilities	<p>Providing evidence to the Inquiry, as required, including health-related documents from the COVID-19 response and interviews with current and former Ministry staff.</p>
Upcoming Milestones and decisions	<ul style="list-style-type: none"> • Public consultation on the Royal Commission of Inquiry will close on 24 March • Following public consultation, Ministers will consider any changes to the Terms of Reference that are required • Ministers may also consider the appointment of additional commissioners to the Inquiry following the resignation of Hon Hekia Parata • We will inform you of any evidence the Ministry will be providing to the Commission • Currently, the Inquiry must report by 30 September 2024.
Risks and Issues	<p>The Ministry is not managing any active risks.</p>
Key Stakeholders	<p>The Minister for Internal Affairs is responsible for advice on changes to the Inquiry.</p> <p>DPMC coordinates the response to the Inquiry across government agencies (reflecting the All-of-government structures that were in place as part of the COVID-19 response).</p>
Cross over with other sectors / Ministerial portfolios	<p>The Minister for Internal Affairs.</p>

1.7 Therapeutic Products Act (TPA)

Deputy Director-General	<p>Maree Roberts, Strategy Policy and Legislation</p>
Key Responsibilities	<ul style="list-style-type: none"> • Progressing the repeal of the TPA • Developing future policy on the regulation of medicines, medical devices and natural health products (NHPs) • Developing options for implementing the new regulatory regime for medicines, medical devices and NHPs, including the form and function of the new regulator. • Engaging with stakeholders in relevant sectors on behalf of Minister.

Upcoming Milestones and decisions	As part of first 100-days Cabinet will consider a paper on progressing the repeal of the TPA and seeking agreement to undertake future policy work on the regulation of medicines, medical devices and NHPs.
Risks and Issues	<p>Stakeholder uncertainty about how known issues in current regulatory regime will be addressed following repeal of the TPA</p> <p>Efforts to implement new legislation to regulate some or all of these products will delay commencement of reforms from 2026 (TPA commencement date) to 2028 at earliest.</p>
Key Stakeholders	<ul style="list-style-type: none"> • Medicines New Zealand • Medical Technology Association of New Zealand • Natural Health Products New Zealand • Natural Health Alliance • Practitioner regulatory/representative groups • Consumer groups • Patient advocacy groups • Rongoā Māori practitioners • Health NZ • Medsafe • Pharmac • Other Crown agencies.
Cross over with other sectors / Ministerial portfolios	<p>Depending on the scope of future legislation, this work is likely to intersect with most policy areas within the Ministry. Future legislation is also likely to affect practitioners and so will have workforce and clinical implications.</p> <p>Will strongly link with Minister Seymour's priorities around Medsafe approval processes and the development of an overall Medicines Strategy.</p>

1.8 Emergency Road and Air Services

Deputy Director-General	Martin Hefford, Director Living Well - Te Whatu Ora
Key Responsibilities	<p>Te Whatu Ora Ambulance team commissions emergency ambulance services to help New Zealanders get the emergency care they need. The Ambulance team is involved in several areas.</p> <p>Planning and commissioning emergency ambulance services and providing monitoring and oversight across the sector.</p> <p>Fulfilling Te Tiriti o Waitangi obligations by working in partnership with Te Aka Whai Ora as co-commissioners.</p> <p>Working with providers and the wider health and emergency services sectors to ensure emergency ambulance services contribute to better and more equitable health outcomes for Māori.</p> <p>Working with funders and providers to resolve issues, improve services, and find system efficiencies.</p>

Upcoming Milestones and decisions	N/A
Risks and Issues	Whilst operational work to address immediate (and some longer-term) issues are continuing, there has been no further strategic policy work to address the role of emergency ambulance, nor sustainability, equity and integration of emergency ambulance services.
Key Stakeholders	<ul style="list-style-type: none"> Health New Zealand Te Whatu Ora's Ambulance Group in Living Well ACC Ambulance sector stakeholders (Health New Zealand Te Whatu Ora leads these relationships).
Cross over with other sectors / Ministerial portfolios	Links with primary and community healthcare regarding the role of paramedics and ambulance services in the sector (Hon Dr Reti's portfolio).

1.9 Family and Sexual Violence

Deputy Director-General	Maree Roberts, Strategy Policy and Legislation
Key Responsibilities	<p>Health contribution to implementing Te Aorerekura: National Strategy to Eliminate Family Violence and Sexual Violence</p> <p>Attending the Family Violence and Sexual Violence Ministerial Group meetings (timeframe tbc).</p>
Upcoming Milestones and decisions	<p>Te Puna Aonui business unit organises the Te Aorerekura Annual Hui (the Hui), which brings people together to learn and enable the collective work to implement Te Aorerekura. We are awaiting confirmation from Te Puna Aonui on whether this will be taking place this year.</p> <p>The Te Ohaakii a Hine – National Network Ending Sexual Violence Together (TOAH-NNEST) national sexual conference 2024 is set to take place in November this year.</p> <p>Te Kupenga Whakatoki Mahi Patunga (National Network of Family Violence Services) will be holding their national family violence conference in May this year.</p>
Risks and Issues	<p>Non-fatal strangulation services (Health New Zealand)</p> <p>The uptake of non-fatal strangulation services (NFSS) has been lower than forecasted, resulting in an underspend held by Health New Zealand Te Whatu Ora. The Ministry of Justice are reprioritising funding they hold for NFSS elsewhere, and Police are in discussions within their agency on whether to reprioritise this funding.</p> <p>s 9(2)(f)(iv)</p> <p>There is a risk that if funding is diverted from FVSV responses to other areas in health, this could impact on our ability to support victims of FVSV. This could in turn have</p>

	<p>longer term socio-economic cost as we know that FVSV is a key determinant of poor health outcomes.</p> <p>Health workforce capability (Health New Zealand)</p> <p>While there is a need to improve the capability of the health workforce in preventing and responding to FVSV, the health system is already under considerable pressure. There are over 250,000 people who work in the health sector who need to be trained to better address FVSV. It is important that we take the time to fully consider the approach as to how we set up the right policies, procedures, and resources to keep staff and victims safe. This will enable us to train the workforce to better address FVSV and to prioritise training to have the greatest impact.</p>
Key Stakeholders	<ul style="list-style-type: none"> • Medical Sexual Assault Clinics (MEDSAC) • National Collective of Independent Women’s Refuges • Te Kupenga Whakaoti Mahi Patunga (National Network of Family Violence Services) • TOAH-NNEST
Cross over with other sectors / Ministerial portfolios	<p>Links with Hon Karen Chhour responsibility for leading the government’s work to reduce child abuse and neglect in her role as Minister for Children. This has strong interconnections with her portfolio as Minister for Prevention of Family Violence and Sexual Violence, however, does not directly fall under the governance and work of Te Puna Aonui to implement Te Aorerekura.</p> <p>The Family Violence and Sexual Violence Work Programme includes a focus on prevention of elder abuse. This links to your delegation for aged care.</p>

1.10 Surrogacy

Deputy Director-General	Maree Roberts, Strategy Policy and Legislation
Key Responsibilities	<p>Related to ethical approval of surrogacy arrangements, the Minister of Health is responsible for establishing and supporting the functions of the Advisory Committee on Assisted Reproductive Technology (ACART) and Ethics Committee on Assisted Reproductive Technology (ECART).</p> <p>The Ministry of Health is responsible for administering the Human Assisted Reproductive Technology (HART) Order (schedule of established procedures and exceptions).</p> <p>Related to surrogacy reform, the Ministry is providing advisory support to the Health Committee on the Improving Arrangements for Surrogacy Bill.</p>
Upcoming Milestones and decisions	<p>You will receive a briefing providing an overview of the surrogacy delegation on 22 February 2024 (H2024035866).</p> <p>The Health Committee is due to report the bill back to the House by 29 March 2024, however the report-back date is expected to be extended.</p>
Risks and Issues	<ul style="list-style-type: none"> • The upcoming briefing will provide further detail on issues including: • There is widespread agreement that current regulation of surrogacy in New Zealand is not fit for purpose. In particular, laws about legal parenthood do not recognise surrogacy as a distinct way of building families.

	<ul style="list-style-type: none"> • There is currently limited ethical oversight of non-clinic-assisted surrogacies. • Some international surrogacies arranged by New Zealanders are by way of commercial markets that are not held to the same high ethical standards as domestic surrogacies. • Funding has not been set aside for operationalising surrogacy reforms.
Key Stakeholders	<ul style="list-style-type: none"> • ACART and ECART • fertility clinic providers • workforce groups including social workers • infertility counsellors • charity and community groups including Fertility New Zealand • Donor Conceived Aotearoa. <p>A full list will be provided in the upcoming briefing.</p>
Cross over with other sectors / Ministerial portfolios	<p>Ministry of Justice are responsible for the Human Assisted Reproductive Technology Act (HART).</p> <p>Ministry of Justice officials are the lead advisors to the Heath Committee; Ōranga Tamariki and the Department of Internal Affairs are also closely involved in the work.</p>

1.11 Dementia Management

Deputy Director-General	Andy Inder, Director Ageing Well – Health New Zealand Te Whatu Ora
Key Responsibilities	<p>Dementia /Mate Wareware Action Plan (endorsed by Cabinet in November 2021) – led by Health New Zealand Te Whatu Ora.</p> <p>Following Cabinet endorsement of the Plan, to begin improving dementia supports, the Government allocated \$12 million over four years through Budget 2022 to the Dementia Mate Wareware Budget 2022 Initiative (the Initiative). It prioritises Māori, Pasifika, rural residents, and those with younger onset dementia mate wareware. Three types of services were commissioned:</p> <ul style="list-style-type: none"> • post-diagnostic supports for individuals with dementia mate wareware, their whānau, and carers • navigator roles to coordinate and enable access to necessary supports • respite care to provide carers with breaks from their responsibilities. <p>s 9(2)(b)(ii)</p> <p>[REDACTED]</p> <p>[REDACTED]</p>
Upcoming Milestones and decisions	<ul style="list-style-type: none"> • Health New Zealand Te Whatu Ora intends to evaluate the effectiveness of the seven trials funded through the Dementia Mate Wareware initiative. The seven providers are working hard to deliver services as per their contracts • The Dementia Leadership and Advisory Group is having its first mtg of the year on 1/3/24 • Health New Zealand Te Whatu Ora works closely with the secretariat and the Groups Chairs.
Risks and Issues	There are no major risks currently.

Key Stakeholders	<p>Non-government organisations</p> <ul style="list-style-type: none"> • Alzheimers New Zealand • Dementia Auckland • Dementia Wellington • National Dementia Cooperative • NZ Aged Care Association (NZACA) • Mate Wareware Advisory Rōpū • Dementia New Zealand • New Zealand Dementia Foundation <p>Māori Provider organisations</p> <ul style="list-style-type: none"> • Te Puna Ora o Mātaatua Charitable Trust • Manaaki Ora Trust • Te Hau Ora o Ngāpuhi
Cross over with other sectors / Ministerial portfolios	

1.12 Aged Care

Deputy Director-General	<p>Maree Roberts, Strategy Policy and Legislation, and Andy Inder, Director Ageing Well – Health New Zealand Te Whatu Ora</p>
Key Responsibilities	<p>Technical adjustments to the Residential Care Subsidy as part of the 2024 Annual General Adjustment (AGA).</p> <p>New Zealand’s aged care sector is comprised of two main services and a range of supporting services. These include:</p> <ul style="list-style-type: none"> • Community-based aged care and dementia services and • Home and Community Support Services (HCSS) <p>Key responsibilities for Health New Zealand Te Whatu Ora include responsibility for commissioning, designing, planning, funding and monitoring.</p> <p>A two-part review of aged care funding and service models is underway – HNZ commissioned Sapere to undertake a strategic assessment and provide a report of the current settings of aged residential care (ARC) and home and community support services (HCSS)</p>
Upcoming Milestones and decisions	<p>In May, seek Cabinet’s authorisation to submit Amendment Regulations to the Executive Council to make the AGA.</p> <p>The Sapere Report is planned for proactive release in March 2024</p>
Risks and Issues	<p>Media coverage following the release of the Sapere Report will potentially place additional pressure on Health New Zealand and Ministers regarding funding levels.</p> <p>Key mitigations include a communications plan to support the release of the Report and progressing part two of the review which focuses on recommending solutions to the challenges.</p>

Key Stakeholders	<ul style="list-style-type: none"> • Ministry of Social Development (MSD) • Peak bodies including NZ Aged Care Association, Care Association New Zealand (CANZ), Home and Community Health Association (HCHA), New Zealand Needs Assessment Service Coordination Association • ARC and HCSS providers, Hauora Māori Partners • Unions including PSA, NZ Nurses Organisation, E tū • Non-government organisations and advocacy groups including NGO Health & Disability Network Council, Presbyterian Support, Alzheimer’s NZ, Dementia NZ, NZ Dementia Foundation, Grey Power, Age Concern, NZ Carers Alliance, Carers NZ, NZ Council of Christian Social Services, Māori Women’s Welfare League.
Cross over with other sectors / Ministerial portfolios	<p>MSD administer the residential care subsidy. The May Cabinet paper will be joint with the Minister for Social Development, Hon Louise Upston.</p> <p>Links with hospital & specialist services, primary and community care including General Practice and Pharmacy (Hon Dr Reti’s portfolio) to achieve a more integrated model of care.</p>

2.1, 2.2, 2.3 and 2.4 Smokefree Environments and Regulated Products Act, Vaping, Smokeless tobacco and Oral Nicotine

Deputy Director-General	Andrew Old, Public Health Agency
Key Responsibilities	<p>Progressing the removal of key provisions in the Smokefree Environments and Regulated Products Amendment Act 2022 through an Amendment Bill.</p> <p>Progressing Coalition Agreement commitments including providing advice on amending vaping product requirements and serious penalties for selling vapes to under 18s.</p>
Upcoming Milestones and decisions	<p>As part of the 100-Day Plan, Cabinet will consider the LEG paper on progressing the Amendment Bill on 26 February.</p> <p>The Bill will be introduced on 27 February and will be passed under urgency.</p> <p>The Social Outcome Committee will shortly (date tbc) consider a cabinet paper seeking agreement to progress Coalition Agreement commitments related to vaping and other products.</p>
Risks and Issues	<p>Stakeholder and public criticism of the 100-Day Plan commitment to repeal amendments to SERPA and regulations.</p> <p>The Waitangi Tribunal has received an application for an urgent hearing in relation to repeal of amendments to SERPA and related regulations.</p>
Key Stakeholders	<ul style="list-style-type: none"> • ASH NZ • ASPIRE 2025 • Cancer Society • Hāpai te Hauora • Health New Zealand Te Whatu Ora • The Māori Health Authority Te Aka Whai Ora • other Crown agencies.

Cross over with other sectors / Ministerial portfolios	Depending on decisions made (eg by SOU) potential cross-over with Customs, Treasury and MFAT.
---	---

List of stakeholders for health

Attachment 1 provides a list of stakeholders for health, and which was first provided to Ministers prior to Christmas, 2023. The Communications team in the Ministry of Health is in the process of updating this information and will re-send the list once completed.



Maree Roberts
Deputy Director-General
Strategy, Policy and Legislation

PROACTIVELY RELEASED

Health sector stakeholders November 2023

Contents

Health and Disability System.....	6
St John Ambulance, Hato Hone.....	6
Wellington Free Ambulance.....	7
Pharmac.....	7
Health and Disability Commissioner.....	8
Whakarongorau Aotearoa National Telehealth Service (formerly Homecare Medical).....	9
Health Research Council of New Zealand (HRC).....	9
Accident Compensation Corporation.....	10
Te Tāhū Hauora Health Quality and Safety Commission.....	10
Environmental Science and Research (ESR).....	11
New Zealand Blood and Organ Service (NZBOS).....	12
Mana Mokopuna Children and Young People’s Commission.....	13
New Zealand Health Group.....	14
Primary and Community Care.....	15
Royal NZ College of General Practitioners.....	15
General Practice NZ.....	16
NZ College of Midwives.....	16
Rural Health Network Hauora Taiwhenua.....	17
Pharmaceutical Society of NZ.....	17
NZ Aged Care Association.....	17
Whānau Āwhina Plunket.....	18
General Practice Owners Association of Aotearoa NZ/Gen Pro.....	18
General Practice Aotearoa.....	18
Practice Managers and Administrators Association of NZ.....	19
Federation of Primary Health Aotearoa New Zealand.....	19
Whānau Ora Commissioning Agency.....	20
Te Pūtahitanga o Te Waipounamu.....	20
University of Auckland.....	20
Workforce – Professional Colleges.....	21
Australasian College for Emergency Medicine.....	21
Royal New Zealand College of Urgent Care Physicians.....	21

Australasian New Zealand College of Anaesthetists.....	21
College of Nurses Aotearoa	22
The Council of Medical Colleges (CMC)	24
The Royal Australian and New Zealand College of Psychiatrists	24
Royal Australian and New Zealand College of Radiologists (RANZCR).....	25
Royal Australian and NZ College of Ophthalmologists	26
Royal Australasian College of Surgeons (RACS)	27
Royal College of Pathologists of Australasia	27
NZ College of Public Health Medicine	28
Royal Australasian College of Physicians.....	28
Royal Australia and New Zealand College of Obstetrics and Gynaecology.....	29
Workforce - Responsible Authorities.....	30
Chinese Medicine Council of New Zealand.....	30
Dental Council of New Zealand	30
Dietitians Board.....	31
Medical Council of New Zealand.....	31
Medical Radiation Technologists Board	31
Medical Sciences Council	32
Midwifery Council of New Zealand.....	33
New Zealand Chiropractic Board.....	34
New Zealand Psychologists Board.....	34
Nursing Council of New Zealand.....	35
Occupational Therapy Board of New Zealand	35
Optometrists and Dispensing Opticians Board.....	36
Osteopathic Council of New Zealand.....	37
Paramedic Council.....	38
Pharmacy Council of New Zealand.....	38
Physiotherapy Board	39
Podiatrists Board of New Zealand.....	40
Psychotherapists Board of Aotearoa New Zealand.....	40
Workforce – Professional Bodies	42
New Zealand Nurses Organisation.....	42
Association of Salaried Medical Specialists (ASMS)	42
Allied Health Aotearoa NZ (AHANZ).....	43

College of Nurses Aotearoa NZ.....	44
National Nurse Leaders group (NNLg).....	44
Public Service Association.....	44
New Zealand Council of Trade Unions.....	45
E tū.....	45
Specialty Trainees of New Zealand (STONZ)	46
STONZ is a union representing and advocating for all junior doctors, no matter their specialty.	46
NZ Resident Doctor Association (NZRDA).....	46
Association of Professional and Executive Employees (hospital support staff).....	47
New Zealand Medical Students Association.....	47
Paediatric Society of New Zealand	47
Midwifery Employment and Representation and Advisory Service (MERAS).....	47
Pharmacy Guild of New Zealand	48
Pasifika Medical Association	48
The Fono.....	49
Te Ohu Rata o Aotearoa	49
Te Ao Mārama	50
Ngā Maia	50
Te Kaunihera o Ngā Neehi Māori.....	50
Ngā Pou Mana Tangata Whenua Allied Health.....	51
New Zealand Institute of Medical Laboratory Science (NZIMLS).....	51
Tertiary providers.....	52
University of Otago.....	52
University of Auckland.....	52
University of Waikato.....	53
Massey University.....	53
Auckland University of Technology.....	53
University of Canterbury.....	54
Victoria University of Wellington.....	54
Te Pūkenga – New Zealand Institute of Skills and Technology	55
Mental Health and Addiction.....	56
Mental Health and Wellbeing Commission Te Hiringa Mahara.....	56
Platform Trust	56
Te Pou.....	57

Mental Health Foundation.....	58
New Zealand Drug Foundation.....	59
Health research.....	60
New Zealand Association of Clinical Research.....	68
Aotearoa Clinical Trials.....	68
Liggins Institute.....	68
The National Institute for Health Innovation.....	69
Medical Research Institute of New Zealand.....	69
Gillies McIndoe Research Institute.....	70
Research Office - University of Auckland.....	70
Callaghan Innovation.....	71
Malaghan Institute of Medical Research.....	72
Māori Health.....	73
Tā Mason Durie, Emeritus Professor of Māori Research & Development, Massey University.....	73
Iwi Chairs Forum.....	73
Te Rau Ora.....	74
Hāpai te Hauora.....	74
Te Kāhui Rongōā.....	75
Pasifika Health.....	76
Sir Collin Tukuitonga, Associate Dean Pacific, Faculty of Health and Medical Sciences, University of Auckland.....	76
Dr Debbie Ryan, Principal, Pacific Perspectives.....	76
Dr Apisalome (Api) Talemaitoga, General Practitioner.....	76
Dr Kiki Maoate, Associate Dean Pacific, Paediatrics, University of Otago.....	77
Key Health Advocates.....	78
Mike King, Key to Life Charitable Trust and I AM HOPE.....	78
Rob Campbell, Former Te Whatu Ora Board Chair.....	78
Ian Powell, former Executive Director of the Association of Salaried Medical Specialists.....	78
Asthma and Respiratory Foundation NZ.....	78
Action on Smoking for Health (ASH).....	79
Immunisation Advisory Centre.....	79
Professor Michael Baker, Director, Public Health Communication Centre (PHCC).....	80
Professor Michael Plank, Professor in the School of Mathematics and Statistics at the University of Canterbury.....	80
Rachel Smalley, The Medicine Gap.....	80

Dr Phil Bagshaw, Canterbury Charity Hospital Trust.....	81
Mesh Down Under.....	81
Melissa Vining, Patient advocate.....	81
The New Zealand Initiative	81
Sir Ashley Bloomfield, Director Public Policy Impact Institute	82
Carers NZ and Carers Alliance.....	82
Rare Disorders New Zealand.....	83
Industry bodies.....	84
Natural Health Products New Zealand.....	84
Medicines New Zealand.....	84
Medical Technology Association of New Zealand.....	84

PROACTIVELY RELEASED

Health and Disability System

St John Ambulance, Hato Hone

John Whitehead, Chair, Priory Board



St John Ambulance's core service is an emergency and non-emergency ambulance coverage to around 90% of New Zealand's population. But they're also playing an increasing role in meeting the broader health needs of New Zealand communities.

John Whitehead has wide-ranging public sector experience and was Secretary to the Treasury from 2003 to 2011. He has extensive governance experience, including as Executive Director on the Board of the World Bank Group, where he also chaired the Budget Committee and was a member of the Audit and Ethics committees. He is currently a director/trustee of a range of other charitable boards and has carried out reviews for Government.

Peter Bradley, Chief Executive



Peter Bradley's career in the emergency ambulance service spans over 30 years. He worked as a paramedic and then as a senior ambulance operational manager in Auckland for a number of years. In 1995, he took time out to complete an MBA at Otago University. In 1996, he joined London Ambulance Service (LAS) as Director of Operations. He was appointed Chief Executive of the LAS in 2000. Peter returned to New Zealand in 2012 and became Chief Executive Officer of Hato Hone St John in the same year.

Wellington Free Ambulance

Dame Kerry Prendergast DNZM, Chair



The Wellington Free Ambulance provides emergency and non-emergency ambulance coverage to the Greater Wellington region. Wellington Free Ambulance receive some funding from government, the rest is raised through other means, including \$7 million in fundraising every year.

Kerry Prendergast is a former-Wellington Mayor and Vice President of Local Government New Zealand. She has been a registered nurse and a trained midwife. Kerry joined the Wellington Free Board in 2013.

Dave Robinson, Chief Executive



Dave has more than 20 years' experience in community, health and public services, and has held senior management roles within the New Zealand Army and New Zealand Defence Force.

Pharmac

Dr Peter Bramley, Interim Chair



Te Pātaka Whaioranga – Pharmac is the government agency that decides which medicines and related products are funded in Aotearoa New Zealand. PHARMAC works with the Ministry of Health (including Medsafe) to provide affordable access to prescription medicines, procure vaccines and medical devices, and to promote the optimal use of medicines.

Dr Peter Bramley has extensive management experience. He studied at the University of Otago where he gained a Bachelor of Science in Biochemistry and Physiology and also completed his PhD in Medicine. He has previously lectured in Biochemistry and in Dunedin and Christchurch.

Sarah Fitt, Chief Executive



Sarah was appointed Chief Executive of Pharmac in January 2018, having been Pharmac's Director of Operations since 2013. Before joining Pharmac, Sarah spent 12 years as Chief Pharmacist at Auckland Hospital and worked as a clinical pharmacist in the NHS specialising in HIV, intensive care and hepatology.

Te Aho o Te Kahu, the Cancer Control Agency

Rami Rahal : Tumuaiki, Chief Executive & National Director of Cancer Control



Rami was appointed in July 2023, bringing with him over thirty years of health system leadership experience and dedication to improving outcomes for people affected by cancer, particularly indigenous communities.

For the past 12 years, Rami has held several senior leadership roles at the Canadian Partnership Against Cancer (Canada's national cancer agency).

Prior to his career at the Canadian Partnership Against Cancer Rami led a healthcare management consultancy firm, providing policy and planning decision support to cancer agencies and other health care organisations across Canada.

Rami holds a Master of Business Administration, Health Services Management, from McMaster University, Hamilton, Canada. He also holds a Bachelor of Science (Honours) in Molecular Biology and Genetics from the University of Toronto, Canada.

Health and Disability Commissioner

Morag McDowell, Commissioner



The Health and Disability Commissioner promotes and protects people's rights as set out in the Code of Health and Disability Services Consumers' Rights. This includes resolving complaints in a fair, timely, and effective way. HDC is an independent watchdog, providing people using health and disability services with a voice, resolving complaints, and holding providers to account for improving their practices at an individual and system-wide level.

Morag McDowell began her term in September 2020. Prior to her role as Commissioner, Morag McDowell served nearly 13 years as a

Coroner based in Auckland. She was formerly a Crown Prosecutor, Director of Proceedings for the Health and Disability Commissioner's Office, and a Senior Legal Adviser at Crown Law.

Whakarongorau Aotearoa | National Telehealth Service (formerly Homecare Medical)

Roger Sowry, Chair



Whakarongorau Aotearoa | New Zealand Telehealth Services (previously Homecare Medical) is a social enterprise running Government-funded, free to the public national telehealth services for the people of Aotearoa. Those services run 24x7 across seven digital channels including voice, webchat, and text.

Roger Sowry had a 15-year career in Parliament holding portfolios such as Social Welfare and Health, experience as the Chief Executive of Arthritis New Zealand and a partner at Saunders Unsworth.

Glynis Sandland, Chief Executive Officer



Glynis Sandland has been CEO since April 2023. She joined Whakarongorau Aotearoa as Chief Operating Officer in June 2022. In that role she has overseen all Whakarongorau Aotearoa's operations, for the 30+ free to the public health, mental health, family violence, and sexual harm telehealth services across digital channels.

Health Research Council of New Zealand (HRC)

Professor Lester Levy CNZM, Chair



The HRC is the Crown agency responsible for advising the Minister of Health on national health research policy, advising on health research priorities for New Zealand, initiating and supporting health research, fostering the recruitment, and training and retention of health researchers in New Zealand.

The Minister of Health is the responsible Minister and appoints the Council. Parliament appropriates funding for the HRC through Vote Research, Science and Technology, which is administered by the Minister of Science, Research and Innovation, who is supported by the Ministry of Business, Innovation and Employment (MBIE).

Significant Government decisions on HRC are made jointly by the Ministers of Health and Research, Science and Innovation.

Lester Levy has been Chair of the HRC since 2015 and is a business leader, adjunct professor, and medical doctor based in Auckland.

Professor Sunny Collings



Professor Sunny Collings became chief executive of the HRC in February 2020, following nine years as Dean and Head of Campus at the University of Otago Wellington. Sunny has a background as a clinician and researcher, having practised as a Consultant Psychiatrist for over 25 years and led a research team at the University of Otago Wellington.

Accident Compensation Corporation

Dr Tracey Batten, Acting Chair



Acting Chair from 1 December 2023. Tracey is an experienced non-executive director. She is a qualified medical practitioner and holds a Master of Business Administration from Harvard University.

Megan Main, Chief Executive



Megan has been CE since November 2021. Prior to joining ACC, Megan held leadership roles at the Ministry of Business, Innovation and Employment as Deputy Chief Executive of Managed Isolation and Quarantine, and Deputy Chief Executive of the Corporate, Governance and Information Group.

Te Tāhū Hauora | Health Quality and Safety Commission

Rae Lamb, Chair



Te Tāhū Hauora | Health Quality and Safety Commission was established in December 2010. It leads and coordinates work across the health and disability sector to monitor and improve the quality and safety of health and disability support services. The Health Quality and Safety Commission advises the Minister on improving the quality and safety of health and disability support services and determines and reports quality and safety indicators (such as serious and sentinel events). It also has a range of functions relating to mortality, including appointing and supporting the National Mortality Review Committee.

Rae Lamb has an extensive background in journalism and has worked as deputy commissioner in the office of the Health and Disability Commissioner and more recently, as aged care complaints commissioner for all of Australia.

Dr Peter Jansen Chief Executive Officer



Dr Peter Jansen (Ngāti Hinerangi, Ngāti Raukawa) is a specialist medical practitioner with extensive experience in health service governance, management, research and service delivery.

He was most recently the medical advisor to ACC. Prior to this, he was the executive director of medical services and clinical governance for a large district health service in New South Wales, Australia.

Dr Jansen is a distinguished Fellow of the Royal New Zealand College of General Practitioners for his work on cultural competence and health equity for Māori.

Environmental Science and Research (ESR)

Professor Sarah Young, Chair



ESR is a Crown Research Institute that plays a critical national role in public health and forensics and is a key contributor to environment and biosecurity outcomes. The services they provide through their expertise in health, forensic, food, water and radiation sciences allows communities to thrive and prosper. ESR is wholly-owned by the Crown and has two shareholding Ministers who act to protect the Crown's investment: the Minister of Research, Science and Innovation and the Minister of Finance, with the Minister of Research, Science and Innovation acting as the responsible Minister. Under the Crown Entities Act, Ministers have powers with regard to all entities on matters of strategic direction, targets, funding, performance, reporting and reviews. The Ministry of Business,

Innovation and Employment (MBIE) is the primary monitoring agency for ESR.

Sarah Young is a professor of immunology and Executive Dean of Science at the University of Canterbury. She has expertise in developing and leading people, strategy and policy and has undertaken a variety of board and leadership roles.

Peter Lennox, Chief Executive



Peter Lennox took up the role of Chief Executive at ESR in August 2020. From 2011 to 2020, he was the Chief Executive of MetService and its international subsidiary Metraweather. During his tenure at MetService, he was New Zealand's designated Permanent Representative with the United Nations World Meteorological Organization (WMO). Peter has post-graduate degrees in biochemistry and biological sciences from Queen's University (Belfast) and Heriot-Watt University (Edinburgh), as well as an MBA in Finance and Strategy from Glasgow University. He has also studied at the London Business School.

New Zealand Blood and Organ Service (NZBOS)

Fiona Pimm, Chair



NZBOS was established in 1998 under the New Zealand Public Health and Disability Act 2000 and is an appointed entity pursuant to section 63 of the Human Tissue Act 2008 being primarily responsible for the performance of functions in relation to blood and controlled human substances in New Zealand. NZBS is a Crown Entity under the Crown Entities Act 2004. Pursuant to section 7 of the Crown Entities Act 2004, NZBS is required to give effect to Government policy when directed by the responsible Minister, the Minister of Health. From November 2020 it took over the co-ordination of deceased organ donation, and became the New Zealand Blood and Organ Service.

Fiona Pimm is an independent consultant and director with more than forty years' experience in the health sector and extensive governance experience. She previously worked in senior executive roles in primary care and District Health Board management, as well as in Māori Health with Ngāi Tahu.

Sam Cliffe, Chief Executive Officer



Sam leads the Executive Leadership Team and is accountable to the New Zealand Blood Service Board. The CEO has overall responsibility for organisational performance including delivery of both its annual and strategic plans.

Office of the Privacy Commissioner

Michael Webster, Privacy Commissioner



The Privacy Commissioner is required to meet with the Register for Assisted Dying.

Michael Webster is the Privacy Commissioner. Michael holds a Master of Public Management and BA (Hons) from Victoria University of Wellington and is a graduate of the EY/Darden School of Business Programme, and the Executive Fellows Programme of the Australia and New Zealand School of Government.

Mana Mokopuna | Children and Young People's Commission

Dr Claire Achmad, Children's Commissioner



Established in July 2023, Mana Mokopuna - Children and Young People's Commission is an independent advocate for all 1.2 million mokopuna aged under 18 in Aotearoa and care-experienced mokopuna aged up to 25. The Commission is an Independent Crown Entity governed by a board of six Commissioners led by Chief Children's Commissioner.

Claire Achmad started her role 1 November 2023 replacing Judge Frances Eivers. Dr Achmad holds a doctorate in international children's rights law from the Netherlands, has worked for children's rights organisations in Aotearoa, Australia and overseas and has been published internationally on a range of children's rights issues. Most recently, she was CEO of Social Service Providers Te Pai Ora o Aotearoa.

New Zealand Health Group

Josephine Gagan, Chair



New Zealand Health Group is a leading national provider of home and community support services, disability support, rehabilitation, mental health and behavioural support, health staffing, workplace support, and training. Their team of almost 10,000 carers, support workers, nurses, and other health professionals provide close to 200 services across Aotearoa to tens of thousands of New Zealanders.

Josephine Gagan has over 30 years' experience in the home and community sector, and six years as CEO / Managing Director of New Zealand Health Group. She co-founded Geneva Healthcare in 1996, prior to which she spent 15 years in clinical nursing and health management in New Zealand and the UK.

Jane Kelley, Group Chief Executive Officer



Jane has held a variety of executive, operational, and project leadership roles over 25 years in the health sector.

Primary and Community Care

Royal NZ College of General Practitioners

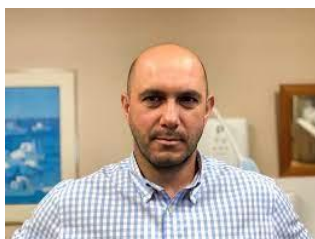
Dr Samantha Murton MNZM, President & Chair



The Royal New Zealand College of General Practitioners is the professional body and postgraduate educational institute for general practitioners and rural hospital doctors with a membership of more than 5,700 GPs, rural hospital doctors, and registrars.

Dr Samantha Murton has worked both in practice and as a Senior Lecturer and Trainee Intern Convenor at University of Otago, Wellington. She has led a low-cost inner-city practice for the past twenty years (without VLCA funding) staffed mostly by female GPs. She is also the Chair of the Council of Medical Colleges

Dr Luke Bradford, Medical Director – appointed in April 2023



Dr Bradford is a Tauranga-based GP working at 5th Avenue Family Practice and became a partner at the practice in 2013. He trained in Southampton in the UK and moved to New Zealand in 2008. Initially working in emergency medicine, Dr Bradford left the hospital system and travelled via urgent care to Hauora medicine, a Māori philosophy of health, where he worked at Ngati Kahu Hauora in Tauranga and was the GP for Matakana Island. In 2021 Dr Bradford became one of the Chief Medical Officers at BoP DHB and looked after the surgical services, child, women and family teams and primary care work as well as being clinical lead for COVID-19.

Lynne Hayman, Chief Executive



Lynne Hayman has been Chief Executive since 2019. Lynne has held several governance positions, and is currently serving on the Board of Osteoporosis New Zealand.

General Practice NZ

Dr Bryan Betty ONZM, Chair



General Practice NZ is the key national organisation with 24 member organisations providing support and advocacy services for general practice networks and teams. They work with government and a wide range of health organisations, promoting ideas and supporting initiatives that advance effective primary care and improved population outcomes.

Dr Betty has taken over the role of chair GPNZ from Karori GP Jeff Lowe in early 2023. Dr Betty has spent 20 years working at a General Practice in Porirua.

Maura Thompson, Chief Executive Officer



Since moving to Auckland from London in 2009, Maura Thompson has held a variety of roles in New Zealand's health sector. Her journalism career included a period as editor of *New Zealand Doctor*. She has been CEO of General Practice New Zealand since November 2021.

NZ College of Midwives

Nicole Pihema, President



The NZ College of Midwives represents more than 90% of all practising midwives and works in partnership with maternity consumer groups such as Plunket, Parents Centre New Zealand, the Home Birth Association and La Leche League to ensure high quality maternity services in New Zealand.

Nicole Pihema is the current President of the New Zealand College of Midwives. She is of Ngāpuhi and Te Rarawa descent and is a Lead Maternity Carer (LMC) midwife in the Bay of Islands and has been a registered midwife since 2010.

Rural Health Network | Hauora Taiwhenua

Dr Fiona Bolden, Chair



Starting out as the Rural General Practice Network, The Rural Health Network now has united with Rural Health Alliance Aotearoa New Zealand, Rural Nurses New Zealand, New Zealand Rural Hospital Network, Students of Rural Health Aotearoa & the New Zealand Institute of Rural Health to form a new collective organisation representing the breadth of the rural health sector.

Fiona Bolden has been a rural GP since 1996 and is currently based in the Coromandel, working in Whangamata. She comes from Devon (UK) and trained at Bristol University.

Pharmaceutical Society of NZ

Professor Rhiannon Braund, President



The Pharmaceutical Society of New Zealand is the professional membership organisation representing pharmacists and pharmacy technicians from all sectors of pharmacy practice in New Zealand. They have around 3,700 members. Approximately 70% per cent are registered pharmacists working in community pharmacies in New Zealand and 15% per cent are registered pharmacists working in hospitals in New Zealand. The balance of membership is made up of New Zealand pharmacy students, pharmacy interns, pharmacy technicians and retired pharmacists.

Rhiannon Braund is a Professor at the New Zealand Pharmacovigilance Centre, University of Otago.

NZ Aged Care Association

Simon O'Dowd, Chair



The Association advocates for the aged care sector ensuring the sector gets the support it needs to provide excellent care for older New Zealanders. They represent approximately 93%, or more than 40,000 beds, from New Zealand's aged residential care sector. The services they provide include rest home, hospital, dementia and psychogeriatric care, as well as short-term care.

Simon O'Dowd has been working in the sector for more than 30 years and is a long-standing member of ACA.

Whānau Āwhina Plunket

Dame Fran Wilde, Chair



Whānau Āwhina Plunket is a charity and Aotearoa New Zealand's largest support service for the health and wellbeing of tamariki under-five and their whānau. Plunket is New Zealand's largest provider of Well Child Tamariki Ora services in New Zealand, providing services including a telephone advice service and home visits to around 85% of all babies.

Dame Fran Wilde was appointed as Chairperson of the Royal New Zealand Plunket Trust in November 2020.

General Practice Owners Association of Aotearoa NZ/Gen Pro

Dr Angus Chambers, Chair



GenPro was formed in 2020 by a group of General Practice owners concerned about the lack of direct representation within the Government, Ministry of Health, ACC or health agencies. GenPro is the national representative body directly mandated by, and acting for contracted providers of general practice and urgent care centres across New Zealand to ensure their population health services are appropriately supported and that their businesses are sustainable.

Angus Chambers is a Specialist General Practitioner at Riccarton Clinic in Christchurch. He is one of the founding members of GenPro.

General Practice Aotearoa

Dr Buzz Burrell, Interim Chair



General Practitioners Aotearoa is a membership organisation. It launched in 2023 with the purpose of representing GPs and doctors working within general practice, to represent their interests, and give voice to the issues that impact their work, communities and patients.

Buzz completed general physician training in the United Kingdom before coming to New Zealand as a respiratory research fellow and lecturer for the University of Otago. He is currently a pain MOSS in Auckland, and regional coordinator and senior lecturer for the University of Otago Rural Medical Immersion Programme.

Practice Managers and Administrators Association of NZ

Mary Morrissey, Chair



The Practice Managers and Administrators Association of New Zealand represents Practice Managers, Administrators and the profession of Practice Management. It was established in 1996 and is an incorporated society.

Mary Morrissey has been a Practice Manager and involved in PMAANZ for 20+ years.

Federation of Primary Health Aotearoa New Zealand

Hon Steve Chadwick, Chair



The Federation is New Zealand's peak body for Primary Health Care. It promotes health and wellbeing, on behalf of members. In 2018, 70 of New Zealand's primary health care leaders representing PHOs, pharmacy, midwifery, allied health, nursing and others came together to form the Federation of Primary Health Aotearoa New Zealand. Members include Allied Health NZ, Arthritis NZ, College of Nurses, Gen Pro and Plunket.

Stephanie Anne "Steve" Chadwick QSO served as mayor of Rotorua from 2013 to 2022. She held the positions of Minister of Conservation, Women's Affairs, and Associate Health in the Fifth Labour Government of New Zealand.

Whānau Ora Commissioning Agency

John Tamihere, Chief Executive Officer Te Pou Matakana



The Whānau Ora Commissioning Agency (also called Te Pou Matakana) works with whānau Māori in the North Island. They contract with established Whānau Ora and community providers such as iwi, marae, education providers, church groups, land trusts or sports groups to deliver a coordinated service based around the needs and aspirations of whānau.

John Tamihere is the CEO of the Whānau Ora Commissioning Agency. He is also a politician, media personality, and commentator.

Te Pūtahitanga o Te Waipounamu

Ivy Harper, Chief Executive Officer



Te Pūtahitanga o Te Waipounamu is the Whānau Ora commissioning agency for the South Island. It was formed in partnership between the nine iwi of Te Waipounamu.

Ivy Harper is an established and well-respected leader at Te Pūtahitanga o Te Waipounamu, with a deep understanding of the agency. Prior to her appointment as Pouārahi in August 2022, Ivy worked across a wide range of workstreams, facilitating effective relationships and processes, both internally and externally.

University of Auckland

Professor Matire Harwood, Head of Department of General Practice and Primary Health Care



Matire Harwood (Ngāpuhi) is a New Zealand clinical researcher and trainee general practitioner. She is Head of Department of General Practice and Primary Health Care, GP at Papakura Marae Health Clinic and an associate professor at the University of Auckland. She teaches, supervises postgraduate students, and leads clinical and qualitative research with a focus on managing long term conditions in the community.

Workforce – Professional Colleges

Colleges run the training, fellowship and standards for their profession.

Australasian College for Emergency Medicine

ACEM is responsible for training emergency physicians and advancement of professional standards in emergency medicine in Australia and New Zealand.

Dr Clare Skinner, President



Dr Skinner commenced her presidency in November 2021. She is Senior Staff Specialist in EM (and former Director) at Hornsby Kuring-gai Hospital in Sydney, New South Wales.

Royal New Zealand College of Urgent Care Physicians

The Royal New Zealand College of Urgent Care is responsible for training doctors and maintaining professional standards in urgent care.

Dr Kelvin Ward, Chair Executive Committee



Kelvin is currently Medical Director at the Wellington Accident and Urgent Medical Centre. He also consults as a technical expert for clinic audits against the Urgent Care Clinic standard.

Australasian New Zealand College of Anaesthetists

The Australian and New Zealand College of Anaesthetists (ANZCA) is responsible for training, assessing, and setting standards for all specialist anaesthetists and specialist pain medicine physicians wishing to practice in Australia and New Zealand.

Dr Graham Roper, Chair, ANZCA New Zealand National Committee



Dr Roper chairs the New Zealand National Committee (NZNC), which represents the college in dealing with national agencies such as the Ministry of Health and the Medical Council of New Zealand.

The committee advises the ANZCA Council on New Zealand issues, convenes continuing medical education events for Fellows, runs examination preparation courses for trainees and provides a forum for liaison between training hospitals and the college.

Dr Kieran Davis FFPMANZCA, FPM Dean



Dr Kieran Davis is a pain medicine and anaesthesia specialist at Auckland City Hospital. He is a graduate of Leeds University and he trained in anaesthesia in the North-West of England before undertaking further studies in pain medicine in Auckland.

College of Nurses Aotearoa

The college is a professional organisation of NZ nurses from all regions and specialties. Its role is to:

- support nurses in their ongoing professional development
- develop strategic consumer alliances with the aim of improving access and reducing disparities in NZ healthcare
- provide a voice for the nursing profession and professional commentary on issues which affect nurses, and also the health of the whole community.

Belinda Macfie, Co-Chair (Pakeha caucus)



Holds current roles of Director of Nursing, Hospice Waikato Secretary and Regional Lead (Te Manawa Taki) Nurse Executives Aotearoa.

Rhoena Davis, Co-Chair (Māori caucus)



Holds current roles of Mahitahi Hauora Director of Nursing – Primary Care, Vice Chair New Zealand Rural General Practice Network - Hauora Te Tai Whenua

Kate Weston, Executive Director



Most recent previous role was as Associate Nursing and Professional Services Manager New Zealand Nurses Organization (NZNO).

New Zealand College of Mental Health Nurses | Te Ao Māramatanga

The College represent the professional interests of psychiatric, mental health, addictions and/or disability nurses along with enrolled nurses who work in mental health settings in New Zealand. Their functions include - promoting public awareness of mental health nursing, advancing the educational and clinical expertise of members, developing nursing codes of ethics, education, research and practice, approving national standards of practice, supporting research efforts and promoting clinical career pathways within mental health.

Hineroa Hakiaha, President



Hineroa Hakiaha has mostly recently been the Director of Mental Health and Addictions (Māori) in the Auckland region of Te Whatu Ora. She is an experienced health care professional specialising in Māori nursing and Māori mental health.

The Council of Medical Colleges (CMC)

CMC represents seventeen education medical colleges who provide support to over 9000 medical practitioners working in a range of 34 specialties in the Aotearoa New Zealand health system.

The Board of Trustees is made up of representatives from each of the member colleges.

Dr Samantha Murton, Chair, Trustee Board member



Dr Murton is also the President and Chair of The Royal New Zealand College of General Practitioners

The Royal Australian and New Zealand College of Psychiatrists

The Royal Australian and New Zealand College of Psychiatrists (RANZCP) is responsible for training, educating and representing psychiatrists in Australia and Aotearoa New Zealand.

Dr Elizabeth Moore, Board President



Dr Elizabeth Moore is the President of the Royal Australian and New Zealand College of Psychiatrists (RANZCP) from May 2023 to May 2025.

Ms Sharon McGowan, Chief Executive Officer



Appointed in December 2022. Her previous role was as CEO of the Stroke Foundation.

New Zealand College of Clinical Psychologists (NZCCP)

The New Zealand College of Clinical Psychologists is responsible for training, educating and representing clinical psychologists in New Zealand.

Tricia Stuart, Co-President



Tricia trained in New Zealand at Massey University. After working in Northland and Taranaki she moved to Ontario, Canada. While in Canada she practised in a Child and Adolescent Mental Health Service for 10 years, before moving back to New Zealand in 2016 to start her own private practice.

Angus Maxwell, Co-President



Angus emigrated from Scotland in 1994 and later trained through the University of Auckland Clinical program. He currently works in community mental health with Te Whatu Ora Waitemata, where he is the Principal Psychologist for Adult Mental Health, and maintains a small private practice.

Royal Australian and New Zealand College of Radiologists (RANZCR)

The College and its members work in many ways to develop the professions of clinical radiology and radiation oncology in Australia and New Zealand. The College administers training programs for admission into its professions, accreditation for overseas-trained specialists, and a continuing professional development program for members.

Clinical A/Prof Sanjay Jeganathan

Board President: MBChB, M.MED, FRANZCR Fellowship 2003; Board member since 2019



Duane Findley, Chief Executive Officer

Appointed in September 2021. He served as interim CEO of The Royal Australasian College of Physicians (RACP) from September 2018 to February 2020.



Royal Australian and NZ College of Ophthalmologists

The Royal Australian and New Zealand College of Ophthalmologists (RANZCO) is the medical college responsible for the training and professional development of ophthalmologists in Australia and New Zealand. The Council gives voice to 1,200 members.

Grant Raymond, Board President

Appointed in 2022. He has served as RANZCO's Vice-President and Honorary Treasurer, as well as a Director.



Mark Carmichael, Chief Executive Officer

Appointed in 2022. He comes to the position after serving as CEO of the Australian Society of Anaesthetists for the past decade.



Royal Australasian College of Surgeons (RACS)

The Royal Australasian College of Surgeons (RACS), formed in 1927, is a non-profit organisation training surgeons and maintaining surgical standards in Australia and Aotearoa New Zealand.

Associate Professor Kerin Fielding, President and Chair of Council and Council Executive



Associate Professor Fielding was the first woman in New South Wales to become an orthopaedic surgeon and is only the third woman to undertake the role of president of RACS.

Royal College of Pathologists of Australasia

The RCPA is the leading organisation representing Pathologists and Senior Scientists in Australasia. It trains and supports pathologists and works to improve the use of pathology testing to achieve better healthcare.

Dr Lawrence Bott, President



Lawrie Bott graduated from the University of Sydney and trained as a General Pathologist obtaining Fellowship in 1989. He has been Chief Medical Officer for Sonic Healthcare, Australian pathology since 2017.

Dr Debra Graves, Chief Executive Officer



Debra was appointed as the first CEO of the Royal College of Pathologists of Australasia in February 1999.

NZ College of Public Health Medicine

The New Zealand College of Public Health Medicine (NZCPHM) are responsible for the provision of specialist public health training for doctors who have completed their medical degree and for the ongoing professional development of its Fellows.

Sir Collin Tukuitonga, President



Sir Tukuitonga is a founding member and Board Director of the Pasifika Medical Association (PMA) Group. He served as CEO of the New Zealand Government's Ministry of Pacific Island Affairs (now the Ministry for Pacific Peoples), the Director-General of the Secretariat of the Pacific Community (SPC) and the Director of Public Health for the Ministry of Health.

Royal Australasian College of Physicians

The Royal Australasian College of Physicians connects, educates and represents over 30,000 medical specialists and trainee specialists from 33 different specialties, across Australia and Aotearoa New Zealand.

Dr Stephen Inns, President, Aotearoa New Zealand



Stephen is a gastroenterologist and general physician who provides gastroenterological services to the Hutt Valley.

Royal Australia and New Zealand College of Obstetrics and Gynaecology

The College trains and accredits doctors in the specialties of obstetrics and gynaecology so that they can provide the highest standards of healthcare.

The Aotearoa New Zealand office and committees are dedicated to equitable access to health services, and equity of health outcomes, for all wāhine in Aotearoa New Zealand.

Dr Gillian Gibson, President Elect



Generalist Obstetrician and Gynaecologist at Auckland District Health Board (ADHB) and Clinical Director of the Auckland regional first trimester abortion service.

Catherine Cooper, Executive Director



Catherine has been in the role since May 2023.

Workforce - Responsible Authorities

The following are the 18 independent statutory authorities operating under the Health Practitioners Competence Assurance Act 2003 (HPCA Act). Each authority's purpose is to protect the health and safety of members of the public by providing mechanisms to ensure that health practitioners are competent and fit to practise their professions.

Chinese Medicine Council of New Zealand

Paddy McBride, Chair



The Chinese Medicine Council of New Zealand was established as a Responsible Authority under the HPCA Act in November 2021 to regulate Chinese medicine services in New Zealand. Members were appointed by the Minister of Health in May 2022 and first met in July 2022.

Paddy McBride has been a practitioner of Chinese Medicine for more than 30 years.

Dental Council of New Zealand

Andrew Cautley, Chair



The Dental Council covers dentists, dental specialists, dental therapists, dental hygienists, oral health therapists, clinical dental technicians, dental technicians, and orthodontic auxiliaries.

Andrew Cautley was appointed as chair in February 2022.

Marie McKay, Chief Executive/Registrar



Marie McKay has been Chief Executive of the Dental Council since January 2009.

Dietitians Board

Laila Cooper, Chair



The Board's major functions are to: set standards; prescribe qualifications for scopes of practice by dietitians; accredit and monitor educational institutions and programmes; grant registration of dietitians and issue (annual) practicing certificates; review and promote the competence of dietitians; deal with cases of dietitians who may be unable to perform professionally.

Chair Laila Cooper was reappointed as Chair in March 2020. She is also CEO of Christchurch PHO.

Medical Council of New Zealand

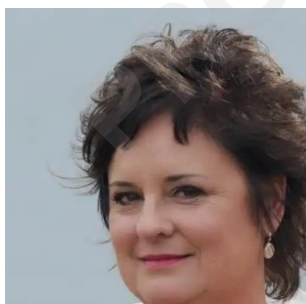
Dr Curtis Walker, Chair



The Medical Council is responsible for registering New Zealand doctors, keeping a register, setting standards, making sure doctors have the skills to practise within scope, promoting continuous learning, and reviewing doctors when their performance, professional conduct or health is a concern. The Council publishes an annual workforce survey.

Dr Curtis Walker was elected to Council in 2015 and was elected Chair in February 2019. He is also on the Board of Te Whatu Ora. He works as a renal specialist and general physician in Palmerston North.

Joan Simeon, Chief Executive



Joan Simeon was appointed Chief Executive in 2017, having spent the previous 14 years in various senior executive roles at Council. She holds a Master's in Public Management and a post-graduate qualification in Dispute Resolution. She is the Chair-elect of the International Association of Medical Regulatory Authorities (IAMRA).

Medical Radiation Technologists Board

The Medical Radiation Technologists Board (the Board) is one of eighteen New Zealand health responsible authorities appointed by the Minister of Health under the Health Practitioners

Competence Assurance Act 2003 (the Act). The Board is responsible for the administration of the Act in regard to the profession of medical radiation technology.

Billie Mudie, Chair



Billie Mudie was appointed to the Board in July 2017. She is a Senior Lecturer and Director of the Bachelor of Radiation Therapy at the University of Otago.

Sue Calvert, Chief Executive Officer



Sue Calvert has worked in the health sector for more than 30 years. She is the CEO of the Medical Sciences Secretariat, which provides business support to both the Medical Sciences Council and the Medical Radiation Technologists Board.

Medical Sciences Council

Brett Besley, Chair



The Medical Sciences Council is responsible for the administration of the Act for two health professions - medical laboratory science and anaesthetic technology.

Brett Besley is an anaesthetic technician and was appointed to the Medical Sciences Council in June 2019. He has worked in both the public and private sector since qualifying in 2004 and is working for Te Whatu Ora - Counties Manukau.

Sue Calvert, Chief Executive Officer



Sue Calvert has worked in the health sector for more than 30 years. She is the CEO of the Medical Sciences Secretariat, which provides business support to both the Medical Sciences Council and the Medical Radiation Technologists Board.

Midwifery Council of New Zealand

The Midwifery Council's role is to ensure midwives meet and maintain high standards of education, conduct and performance.

Ngarangi Pritchard and Kerry Adams, Co-Chairs



Ngarangi Pritchard has been a practising midwife for 27 years and works at Wellington Hospital as an antenatal clinic coordinator.



Kerry Adams is a Principal Lecturer at the School of Midwifery at Otago Polytechnic.

Lesley Clarke, Chief Executive and Registrar



Lesley Clarke was appointed Chief Executive in January 2023. She had previously been CEO of the New Zealand Medical Association for more than 10 years.

New Zealand Chiropractic Board

Tim Cooper, Chair

The Chiropractic Board's role is to protect the public by setting standards for chiropractors in New Zealand. These standards are applied to all education programmes in New Zealand; chiropractors working in New Zealand; and overseas educated chiropractors who wish to work in New Zealand. Dr Tim Cooper is a registered chiropractor practising in Auckland. He is the owner and founder of Optimum Health Chiropractic.

Glenys Sharman, General Manager/Registrar

Glenys Sharman joined the Board as Registrar-General Manager in December 2018.

New Zealand Psychologists Board

The Psychologists Board was established by the Psychologists Act 1981, and was subsequently appointed as an authority under the 2003 HPCA.

Lisa Lawrence, Chair



Lisa Lawrence was appointed as a lay member to the Board in November 2019 and was elected Chair in March 2023. She has a wide range of other health and social service experiences.

Vanessa Simpson, General Manager/Registrar



Vanessa joined the NZ Psychologists Board in October 2022 bringing a background of leadership and governance across the ambulance and health sectors.

Nursing Council of New Zealand

The Nursing Council's primary function is to protect the health and safety of members of the public by ensuring that nurses are competent and fit to practise.

Ngaira Harker, Chair



Ngaira Harker is also Principal Advisor Kaiāwhina Workforce Development with Te Aka Whai Ora.

Catherine Byrne – Chief executive/Registrar



Catherine joined the organisation in February 2019 and has more than 30 years' experience in the health sector.

Occupational Therapy Board of New Zealand

The Board's role is to ensure New Zealanders receive care from occupational therapists who are competent and fit to practise.

Roxanne Waru and Steven O'Connor, Co-Chairs

Roxanne Waru is an occupational therapist living in the Manawatū region.



Steven O'Connor is from Dunedin and is experienced in the community development sector and in the governance of NGO mental health providers.



Andrew Charnock, Chief Executive and Registrar

Andrew Charnock has been CEO and Registrar of the Occupational Therapy Board of New Zealand since 2009. He has held leadership roles in healthcare in both the United Kingdom and New Zealand.



Optometrists and Dispensing Opticians Board

The Optometrists and Dispensing Opticians Board ensures optometrists and dispensing opticians are qualified, competent and fit to practise.

Kristine Hammond, Chair



Kristine Hammond has been a Board member since 2015, becoming Chair in 2022. She is a dispensing optician and a professional teaching fellow at the University of Auckland, School of Optometry and Vision Science.

Elmarie Stander, Chief Executive and Registrar



Elmarie Stander joined the Board in October 2021. She has previously worked for the Australasian College of Emergency Medicine.

Osteopathic Council of New Zealand

The Osteopathic Council of New Zealand registers osteopaths and prescribes the qualifications and standards of ongoing competence required for osteopathic practice in New Zealand.

Matiu Taingahue, Chair



Matiu Taingahue is a graduate of the Unitec Osteopathy programme.

Tim Friedlander, Registrar



Tim Friedlander is the Registrar of the Osteopathic Council and was previously a Council Member for nine years, including terms as Deputy Chair and Chair. He was previously a practising osteopath in Auckland.

Paramedic Council

The role of Te Kaunihera Manapou Paramedic Council is to promote and protect public interest by providing mechanisms to ensure that paramedics are qualified, competent and fit to practise. An order was made to designate paramedic services as a health profession and the establishment of the council on 1 January 2020, and registration of paramedics in Aotearoa commenced in March 2021.

Carlton Irving, Chair



Carlton Irving was appointed in 2020, with his term due to end in December 2025. He continues to work as a paramedic while also studying at the University of Otago to be a doctor.

Jacquelyn Manley, General Manager/Registrar



Jacquelyn Manley has been General Manager and Registrar since February 2022. She was previously Registrar for the Psychotherapists Board of Aotearoa New Zealand.

Pharmacy Council of New Zealand

The Pharmacy Council sets the standards required for pharmacist training, authorises the registration of pharmacists, and considers their applications for annual practising certificates.

Arthur Bauld, Chair



Arthur Bauld was appointed to the Council in 2015 and was reappointed in 2021 for a further three years. He has more than 30 years of pharmacy practice experience in retail and hospital pharmacies and is an Addictions Pharmacist with the Auckland Opioid Treatment Service.

Michael Pead, Chief Executive



Michael Pead has been Chief Executive of the Pharmacy Council since May 2016.

Physiotherapy Board

The Physiotherapy Board sets standards, monitors and promotes competence, continuing professional development and proper conduct for the practice of physiotherapy in the interests of the public health and safety.

David Baxter, Chair



David Baxter is a registered physiotherapist from Alexandra.

Jeanette Woltman-Black, Chief Executive

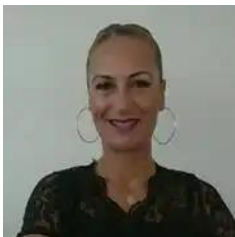


Jeanette Woltman-Black has been Chief Executive since February 2013.

Podiatrists Board of New Zealand

The Podiatrists Board's role includes the registration of podiatrists, maintaining registers, requirements for scopes of practice, annual practising certificates, setting standards for clinical competence, cultural competence and ethical conduct.

Belinda Ihaka, Chair



Belinda Ihaka is also a senior lecturer in AUT in the School of Clinical Sciences in the Department of Podiatry.

Psychotherapists Board of Aotearoa New Zealand

The Psychotherapists Board's primary purpose is to protect the health and safety of members of the public by ensuring that psychotherapists are competent and fit to practise.

Dr Lucie Zwimpfer, Chair



Chair Dr Lucie Zwimpfer was appointed in July 2019 and through till August 2026. She works both privately and in a maternal mental health service. She supervises parent infant mental health clinicians across four child and adolescent mental health services.

Janet Hay, Registrar



Janet Hay has been Registrar of the Psychotherapists Board of Aotearoa New Zealand since January 2022.

PROACTIVELY RELEASED

Workforce – Professional Bodies

Associations/societies act as an advocacy group on behalf of the profession.

New Zealand Nurses Organisation

The New Zealand Nurses Organisation (NZNO) are the nursing union in Aotearoa New Zealand representing more than 55,000 nurses and health workers. They are the leading professional body of nurses in Aotearoa New Zealand. Their members include nurses, midwives, students, kaimahi hauora, health care workers and allied health professionals.

Kerri Nuku, Kaiwhakahaere and Anne Daniels, President (co-leaders)



Kerri Nuku has had a career as a nurse and midwife and senior leadership roles. Kerri has worked both in private and public sector.



Anne Daniels trained as a cadet in Thames. As a qualified registered nurse, she completed new academic nursing papers, and then a master's.

Paul Goulter, Chief Executive Officer



Paul Goulter has been the New Zealand Nurses Organisation's chief executive since 2022. He has been past General Secretary of finance sector union Finsec (Now FIRST union), Secretary of the New Zealand Council of Trade Unions and a director at the Australian Council of Trade Unions. He currently serves on the Board of both the Co-operative Bank and Air New Zealand.

Association of Salaried Medical Specialists (ASMS)

ASMS is the Association of Salaried Medical Specialists. It is the union of senior medical and dental officers working in the public health system and its membership is formed from over 90% of eligible

senior doctors. On behalf of its members, it negotiates the national MECA and offers opinions on members professional concerns over health policy and delivery of health services.

Julian Vyas, President



Dr Vyas is a respiratory paediatric doctor at Starship Children's Hospital, Auckland

Sarah Dalton, Executive Director



Sarah Dalton has been Executive Director since 2020. Before joining ASMS in 2015, Ms Dalton worked at the PPTA for seven years, as a Field Officer, and as an Advisory Officer on Professional Issues. Ms Dalton has held several teaching positions, including that of Assistant Principal at Aotea College and Head of Department for English at Upper Hutt College.

Allied Health Aotearoa NZ (AHANZ)

AHANZ is a national voice for allied health professions in New Zealand. AHANZ is made up of over 30 national allied health associations that represent over 30,000 individual allied health professionals. Collectively the Allied Health professions make up the second largest professional workforce grouping after nursing, and they operate in all areas of the Health System in both public and private capacities.

Sandra Kirby, Co-Chair



Sandra is co-chair of AHANZ and the Chief Executive of Physiotherapy NZ. She has over 20 years' experience in health management and public health policy in New Zealand.

College of Nurses Aotearoa NZ

Established in 1992, the College is a professional organisation of New Zealand nurses from across the country and specialities. They provide a leading voice for the nursing profession and professional commentary on issues which affect nurses, and the health of the whole community.

Kate Weston, Executive Director

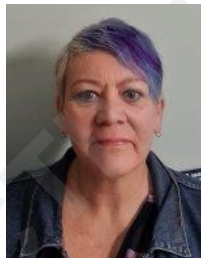
Kate Weston has over 40 years' experience in nursing holding nursing leadership and management roles.



National Nurse Leaders group (NNLg)

NNLg provides collective nursing leadership across national key stakeholder nursing organisations and entities. NNLg comprises nurse leader representatives from across the breadth of the nursing profession.

Kathy Holloway and Brenda Close, Co-chairs



Public Service Association

Aotearoa New Zealand's largest union with over 90,000 members in the Community Public Services, Health, Local Government, Public Service, and State Sector. Their purpose is to build a union that is able to influence the industrial, economic, political and social environment in order to advance the interests of PSA members – creating a better working life for our members.

Benedict Ferguson, President



Benedict was elected PSA President in 2020. He worked for Auckland Council for over 18 years prior to taking up this role.

New Zealand Council of Trade Unions

The New Zealand Council of Trade Unions Te Kauae Kaimahi brings together over 320,000 New Zealand union members in 27 affiliated unions.

Richard Wagstaff, President



Richard Wagstaff was elected NZCTU President in 2015. He was previously NZCTU Vice President and National Secretary of the NZ Public Service Association.

E tū

E tū was launched in October 2015 with the merging of the Engineering, Printing and Manufacturing Union (EPMU), the Service and Food Workers Union (SFWU) and the Flight Attendants and Related Services Association (FARSA). E tū is the biggest private sector union in New Zealand.

Gadiel Asiata and Muriel Tunoho, Co-Presidents

Gadiel Asiata is E tū Co-President and leader of Komiti Pasifika, Griffins Foods





Muriel Tuhono has been chair of the Hutt Union & Community Health Service for 20 years and is involved with many community organisations.

Specialty Trainees of New Zealand (STONZ)

STONZ is a union representing and advocating for all junior doctors, no matter their specialty.

Kate Clapperton-Rees, Executive Director

Kate is responsible for the operational management and strategic leadership of STONZ.



NZ Resident Doctor Association (NZRDA)

The NZRDA stands for New Zealand Resident Doctors' Association – or the RDA for short. The NZRDA is the only union in New Zealand solely representing the interests and protecting the safety of RMOs (RMO means Resident Medical Officer and includes trainee interns, house surgeons, senior house officers and registrars).

Dr Deborah Powell, National Secretary

Deborah holds the position of National Secretary and has the overall management responsibility for the union with a particular interest in Collective Employment Negotiations and Personal Grievances. She represents health practitioners in claim situations with both employers and individuals.



Association of Professional and Executive Employees (hospital support staff)

APEX is the specialist union representing over 4000 allied, scientific and technical health professionals throughout New Zealand, employed in both the public and private sector.

Deborah holds the overall management responsibility for the office with a particular interest in Collective Employment Negotiations and Personal Grievances. She represents health practitioners in claim situations with both employers and individuals.

Dr Deborah Powell, National Secretary (as above)

New Zealand Medical Students Association

The New Zealand Medical Students' Association (NZMSA) is a student-run association established in 1972. Its vision is to represent, unite, and empower New Zealand medical students on the views, issues and concerns relevant to them. It represents 2906 medical students across the country and has 23 executive members.

Thomas Swinburn, President



Thomas Swinburn has completed five years of medical school and is undertaking a population health epidemiology project.

Paediatric Society of New Zealand

The PSNZ is a multidisciplinary child and youth health organisation well engaged with consumers and strongly representative of the child and youth health sector.

Dr Michael Shepherd, President



Mike is current President and works in the Starship Paediatric Emergency Department.

Midwifery Employment and Representation and Advisory Service (MERAS)

MERAS was established in 2002 as a separate but associated organisation by the NZ College of Midwives (the College). MERAS represents over 90% of midwives and maternity care assistants

employed in maternity services across New Zealand providing a strong collective voice on workplace issues. MERAS comes under the NZCTU umbrella.

Jill Ovens and Caroline Conroy, Co-leaders



Jill Ovens is a New Zealand trade unionist and women's rights activist. She is the founder of the Women's Rights Party an openly feminist political party. She was co-leader of the Alliance party before changing her allegiance to the Labour Party.



Caroline Conroy is co leader midwifery. Caroline has been the media spokesperson for recent pay equity deals for midwives with Te Whatu Ora.

Pharmacy Guild of New Zealand

The Pharmacy Guild of New Zealand provides support and services to community pharmacy owners.

Andrew Gaudin, Chief Executive Officer



Andrew Gaudin has significant health sector experience, having spent more than 20 years in a variety of leadership and advisory roles including five years as a Strategic Advisor in the Director General of Health's office.

Pasifika Medical Association

Debbie Sorenson, CEO



Debbie Sorensen is the CEO of the Pasifika Medical Association Group of charitable companies and Pasifika Futures the Whanau Ora Commissioning Agency for Pacific families in New Zealand. She has recently been appointed as a member of the Te Niwha Steering Group – the Infectious Diseases Research Platform. She is a member of the Health Advisory Committee for the Privy Council to His Majesty King Tupou VI and is a Strategic Advisor to Te Marae Ora Cook Islands. Debbie is a member of the Pacific Expert Advisory Committee

The Fono

Tevita Funaki, Chief Executive Officer



Tevita Funaki has been CEO of The Fono since 2010. The Fono provides medical, dental, social, public health and educational services across the Auckland region and played a critical role in connecting Pacific individuals, families and communities with the support services and information they needed during the initial Covid-19 outbreak and the recent resurgence. Tevita Funaki also serves as Chairperson on numerous committees, trusts and governance groups and has strong networks with Pacific communities across New Zealand.

Te Ohu Rata o Aotearoa

Te Ohu Rata o Aotearoa (Te ORA) represents Māori medical students and doctors working as clinicians, researchers and teachers.

Professor David Tipene-Leach, Chair



David Tipene-Leach was teaching at Auckland Medical School when he helped to develop Te Ora. He was the first Chair and is the current Chair. Over his 43-year medical career, he has switched between general practice and public health.

Te Ao Mārama

Te Ao Mārama is the professional association for Māori oral health professionals – dental/oral health therapists, dental hygienists, dentists, dental specialists, oral health promoters, dental assistants and administrators, researchers, teachers and students. They provide leadership, representation and support to the Māori oral health workforce.

Leeann Waaka, Tumuaiki (President)

Leeann Waaka is the Tumuaiki of the organisation. She is also the Chairperson of the Rangitāiki Community Board.



Ngā Maia

Ngā Maia Māori Midwives o Aotearoa was formed in 1993 by Māori midwives, midwifery tutors, and their students, to address inconsistencies in maternity services for Māori. Registered as a charitable trust in 1994, Ngā Maia became recognised in maternity circles as the 'voice' for Māori. By 2008 its role was endorsed by the Midwifery Council of New Zealand (MCNZ), the New Zealand College of Midwives (NZCOM), and the Royal Australian and New Zealand College of Obstetricians and Gynaecologists (RANZCOG). Ngā Maia is committed to Māori birthing practices that promote the health and well-being of whānau.

Lisa Kelly, Chair

Lisa Kelly is the current Chairperson of Ngā Maia.



Te Kaunihera o Ngā Neehi Māori

Te Kaunihera o Ngā Neehi Māori o Aotearoa, the National Council of Māori Nurses, was set up as an incorporated society in 1983, with a registered membership of 300, predominantly Māori nurses and community workers.

Jo Marino, Tumuaiki (President)



Jo (Te Arawa, Tūhoe, Ngāti Tūwharetoa, Ngāti Porou) is a registered nurse and is currently the Practice Manager of Korowai Aroha, a kaupapa Māori health service in Rotorua.

Ngā Pou Mana Tangata Whenua Allied Health

Ngā Pou Mana is a national organisation that represents the Māori allied health workforce. They contribute to improving Māori Health and wellbeing by providing support to the Māori allied health workforce to strengthen and grow.

Logan Hamley and Emerald Muriwai, Co-Chairs

The Co-Chairs of Ngā Pou Mana are Logan Hamley, a lecturer in Māori psychology, and Emerald Muriwai, Doctor of Clinical Psychology.



New Zealand Institute of Medical Laboratory Science (NZIMLS)

The Institute was heavily involved in Covid response. NZIMLS represents the professional affairs of more than 3,000 Medical Laboratory Scientists and Technicians in NZ.

Executive Officer Sharon Tozer

Sharon Tozer has been employed by NZIMLS since 2006.



Tertiary providers

University of Otago

The Division of Health Sciences has campuses in Christchurch, Dunedin, and Wellington. It delivers undergraduate programmes in biomedical sciences, dental technology, dentistry, health sciences, medical laboratory science, medicine, oral health, pharmacy, physiotherapy, and radiation therapy. It offers 100+ postgraduate programmes in health. Fifty additional funded medical school places beginning in 2024 are split between Otago and Auckland.

Professor Patricia Priest, Acting Pro-Vice-Chancellor, Health Sciences



Professor Tim Wilkinson, Acting Dean of Otago Medical School and Professor of Medicine and Medical Education



University of Auckland

The Faculty of Medical and Health Sciences consists of six schools, including the School of Nursing, Medical Sciences, Pharmacy, Population Health, Optometry and Vision Science, and the School of Medicine.

Fifty additional funded medical school places beginning in 2024 are split between Otago and Auckland.

Professor Dawn Freshwater, Vice-Chancellor



Professor John Fraser, Dean of Medical and Health Sciences



University of Waikato

Waikato's School of Health delivers programmes in nursing, health promotion, biomedical sciences, sport and human performance. The university has announced it is planning to add a graduate-entry Master of Pharmacy Practice degree from 2025. It has also proposed the establishment of 'the New Zealand Graduate School of Medicine' as New Zealand's third medical school. The focus would be on students from provincial and rural communities who are committed to careers in primary care and to meeting the health care needs of the populations that live outside the main centres.

Professor Neil Quigley, Vice-Chancellor



Professor Jo Lane, Dean of Health



Massey University

Massey's College of Health covers four schools and two research centres. Subject areas include nursing, social work, psychology and mental health, and public health.

Professor Jill McCutcheon, Pro Vice-Chancellor College of Health



Auckland University of Technology

AUT's undergraduate options include counselling, health management, paramedicine, perioperative practice, psychology, public and environmental health, midwifery, nursing, occupational therapy, oral health, physiotherapy, podiatry.

Professor Judith McAra-Couper, Head of School – Clinical Sciences



University of Canterbury

Canterbury's School of Health Sciences offers qualifications in health sciences, nursing, counselling, child and family psychology, and talking therapies and interventions.

Professor Cheryl de la Rey, Vice-Chancellor

Cathy Andrew, Acting Executive Dean – Health



Victoria University of Wellington

Subjects covered by the Wellington Faculty of Health include health informatics, health promotion, health psychology, midwifery, nursing, and population health, policy and service delivery.

Professor Markus Melloh, Dean of Faculty of Health



Te Pūkenga – New Zealand Institute of Skills and Technology

Te Pūkenga consists of 16 institutes of technology and polytechnics and 9 industry training organisations around New Zealand. Health subjects offered at various locations include nursing, paramedic training, social work, medical imaging, and occupational therapy. Peter Winder has wide-ranging expertise in local and central government and the private sector and has held a number of governance roles in the vocational education sector.

Peter Winder, Chief Executive



PROACTIVELY RELEASED

Mental Health and Addiction

Mental Health and Wellbeing Commission | Te Hiringa Mahara

The Mental Health and Wellbeing Commission was established as a result of He Ara Oranga, the 2018 inquiry into mental health and addiction. It is an independent Crown entity operating at arms-length from Government. The functions of the former Mental Health Commissioner are now held within the Commission.

Their objective is to contribute to better and equitable mental health and wellbeing outcomes for all people in New Zealand. They hold monitoring, advocacy and public reporting functions.

Hayden Wano, Chair



Board chair Hayden Wano (Te Atiawa, Taranaki, and Ngāti Awa) is the former CEO of Tui Ora Limited, a position he held for 25 years. He was also Chair of the Initial Mental Health and Wellbeing Commission.

Hayden has over 40 years health sector experience in mental health, community and medical services, and was the former Director of Clinical Services at Taranaki Healthcare Limited.

Karen Orsborn, Chief Executive



Karen Orsborn is the Chief Executive of the Mental Health and Wellbeing Commission. In 2020 Karen led the establishment of the Commission as Head of Secretariat for the Initial Mental Health and Wellbeing Commission. Previously, Karen was Director Health Quality Improvement and Deputy Chief Executive at the Health Quality and Safety Commission (HQSC). In this role she led national patient safety and quality improvement programmes across public and private hospitals, primary and community care, mental health and addiction services, and aged care. Karen has also held roles as National Lead for Elective Services and Group Manager Funding at the Ministry of Health, as well as operational roles in a District Health Board.

Platform Trust

The Platform Trust works with non-governmental organisations (NGOs) and community services that provide support to people who are directly impacted by mental health and addiction. Platform enables sector connection and collaboration and provides a collective environment for optimising the community sector.

Platform hosted the Mental Health and Addiction 2023 election debate and released the Under One Umbrella report commissioned by the Mental Health and Addiction Wellbeing Cross-party Group in September 2023.

Sally Pitts-Brown, Board Chair



Platform Trust Board Chair is Sally Pitts-Brown. Sally originally trained as an occupational therapist and has spent many years in leadership roles across the mental health and social services sectors in NZ and the UK. In 2014, she became the Chief Executive of Pathways, a national provider of community-based mental health and wellbeing services.

Memo Musa, Chief Executive



The Chief Executive of Platform Trust is Memo Musa. Memo is a health executive with substantial leadership and management experience in the New Zealand and United Kingdom health systems. He has a background in mental health and addictions services having trained as mental health nurse in the United Kingdom.

Te Pou

Te Pou is a not-for-profit, national workforce development centre. They aim to improve the lives of people with mental health, addiction, and disability needs by connecting the people working with them with knowledge, resources, training, and information.

The Ministry of Health has worked alongside Te Pou in the development of training and resources for understanding and enacting the Mental Health Act changes.

Julie Nelson, Board Chair



Julie Nelson is Te Pou Board Chair. Julie is a strong advocate for quality housing and effective wrap-around support services for our most vulnerable people. Julie was involved in founding Te Pou.

Rae Lamb, Chief Executive



Rae Lamb is Chief Executive of Te Pou. Rae was a Harkness Fellow in Health Policy at the Harvard School of Public Health and Institute for Healthcare Improvements in the United States. She has recently completed five years as a trustee on the governing board of the internationally distinguished Cochrane.org and is currently the Tāhū Hauora Health Quality & Safety Commission New Zealand Board Chair. Prior to her time at Te Pou, Rae's roles have included being the New Zealand Deputy Health and Disability Commissioner and the Aged Care and Aged Care Complaints Commissioner appointed by the Australian Government.

Mental Health Foundation

The Mental Health Foundation of New Zealand is a charity that works towards creating a society free from discrimination, where all people enjoy positive mental health and wellbeing. They run two national campaigns each year – Mental Health Awareness Week and Pink Shirt Day. They provide mental health resources and information for individuals and communities and advocate for better mental health policies.

Kevin Allan, Board Chair



Kevin Allan is the Chair of the Mental Health Foundation. Kevin recently completed terms as Mental Health Commissioner and Deputy Commissioner with the office of the Health and Disability Commissioner. Previous roles include CE of the Life Flight Trust, CE of CCS Disability Action, Deputy Secretary with the Ministry of Justice and a Performance Review Manager with the Public Service Commission. He has also undertaken a number of governance roles including Chair of the Mary Potter Hospice.

Shaun Robinson, Chief Executive



Shaun Robinson is the Chief Executive of the Mental Health Foundation. Shaun has worked in social and health services for over 30 years - he has held four other CEO positions in not-for-profit organisations and has also been a management consultant to public hospitals, developed a successful training business and been a policy advisor. He has served on commercial and not-for-profit boards and on a range of government working parties and advisory groups.

Shaun champions a holistic response to mental health- particularly the things that people can do in their day to day lives to uplift their

mental wellbeing - whether they are recovering from a time of mental distress, managing a long term condition, or maintaining positive mental health.

New Zealand Drug Foundation

New Zealand Drug Foundation is a charity that works to prevent and reduce drug-related harm in New Zealand. They advocate for policies and practices that are evidence-based and take a safety focused, harm reduction approach.

Their work is supported by government funding, corporate and private grants and donations, and by members. They are working towards four outcomes: Schools keep young people engaged in education; drug laws are changed to treat drug use as a health issue; prevention, harm reduction and treatment interventions are fully resourced and are made more responsive to community need; innovative solutions to reducing drug harm are developed.

Tuari Potiki, Board Chair



Tuari Potiki is the Board Chair of the New Zealand Drug Foundation. Tuari has been extensively involved in the Māori health, mental health, education and justice sectors for over 25 years. He is currently the Director of Māori Development, Otago University.

He has worked in a number of different roles as a Māori alcohol and drug clinician and tutor before moving into management roles in both the public and non-government sector. He served on Southern and Canterbury District Health Boards, the Canterbury Community Trust, Ngāi Tahu's Health and Social Service agency, He Oranga Pounamu, and Whānau Ora Independent Reference Group.

Sarah Helm, Executive Director



Sarah Helm is the Executive Director of the NZ Drug Foundation. She is the main spokesperson for the NZ Drug Foundation, with a focus on drug policy and other drug-related issues.

Sarah has worked for the Alcohol Advisory Council, Health Promotion Agency and NZ AIDS Foundation. She was head of the NZ Association of Adolescent Health & Development (Ara Taiohi) for a number of years. Most recently, she worked for the Department of Prime Minister and Cabinet as Strategic Communications Manager for the COVID-19 response.

Addiction Practitioners' Association Aotearoa New Zealand (DAPAANZ)

DAPAANZ is the membership association representing the professional interests of the addiction workforce in Aotearoa. Set up in 2002 by addiction practitioners, DAPAANZ implemented and maintains the standards of practice for people working in addictions in Aotearoa New Zealand. They are also the stewards of the Code of Ethics for addiction practice.

Ben Birks Ang, Board Chair



Ben is the Deputy Executive Director, Programmes for the New Zealand Drug Foundation. He supports developing approaches that support people to live healthy, successful lives with everything they need to make their own choices. Ben is a Registered Practitioner and Accredited Supervisor.

Sam White, Executive Director



Sam's career spans practicing in rural and urban settings; funding and planning across three DHBs; teaching; and having been General Manager of an addiction service. Completing a PhD about growing the addictions workforce, Sam supports DAPAANZ members to foster excellence in addiction practice.

Problem Gambling Foundation (PFG)

Problem Gambling Foundation has the vision of New Zealand as a socially just nation where all people flourish. Their mission is preventing and reducing gambling harm for all in New Zealand with integrity, mana and innovative solutions. This includes providing counselling services and support groups, advocacy, education and training.

Bridgette Thornley, National Director



Bridgitte held the position of National Clinical Practice Leader before moving into her current role in 2017. Bridgitte is dedicated to maintaining and growing PGF's professional counselling services.

Bridgitte is a Registered Social Worker, a qualified alcohol and drug counsellor and Member of the Drug and Alcohol Practitioners' Association Aotearoa. Bridgitte has been working in the addiction sector since 1990 and in the gambling sector since 1999..

Whāraurau | Werry Workforce

Whāraurau is a national centre for Infant, Child and Adolescent Mental Health (ICAMH) workforce development. Whāraurau is funded by the government to deliver workforce development initiatives for the Infant, Child & Adolescent Mental Health and/or Alcohol and Other Drugs (ICAMH/AOD) sector.

They are contracted by Health New Zealand and Te Tāhuhu o te Mātauranga – through Auckland University - to grow the capacity and capability of the infant, child, and youth mental health and addictions workforce. They work alongside three other Ministry-funded Mental Health Workforce Centres (Te Pou, and Te Rau Ora, Le Va).

They also offer professional development opportunities to the ICAMH and AOD workforce through events, face-to-face training, and eLearning courses.

Abigail Milnes, Director



Abi Milnes is the Director of Whāraurau and is motivated to help our mental health workforce grow their skills to enable whānau to thrive. Abi has managed workforce development programmes in youth mental health, rural health workforce recruitment and retention, and public health policy, primarily in primary care.

Abi is focused on improving the well-being of our workforce and the young people and whānau they serve.

Te Rau Ora

Te Rau Ora work to improve Māori Health through leadership, education, research and evaluation, health workforce development and innovative, systemic transformation. They strengthen Māori health and wellbeing through nationally navigated and locally led solutions.

Riki Nia Nia, Chief Executive



Riki Nia Nia (Ngāti Kahungunu, Ngāi Tūhoe, Tonga) became Chief Executive in July 2023.

Riki brings extensive health sector and workforce leadership experience to this role, including 25 years in executive leadership positions in District Health Boards and most recently as the interim District Co-Director of Te Whatu Ora Waikato and the interim Regional Director Te Manawa Taki for Te Aka Whai Ora.

Donovan Clarke, Chair



Te Rau Ora Chair Donovan Clarke (Waikato-Tainui, Ngāti Hine, Ngāti Manu, Ngāti Te Ata) is an experienced senior executive with a proven history of delivering results in the community. He is focused on transformation and ensuring equity across sectors.

Donovan is a leader amongst the community and with Māori. He is well connected to both Iwi and Pacific leaders across the country. He is a change leader having championed significant projects across primary care, mental health and addictions and the disability sector.

Donovan is currently the Chief Executive for Toitū te Waiora (Community, Health, Education and Social Services) Workforce Development Council.

La Va

Le Va's purpose is to support Pacific families and communities to unleash their full potential. They support and encourage this by designing and developing evidence-based resources, tools, information, knowledge and support services for the best possible health and wellbeing outcomes. They do this while recalling our traditional values, and applying them safely, in a contemporary way.

Denise Kingi-'Ulu'ave, Chief Executive



Denise is a registered clinical psychologist of Tongan descent and the Chief Executive of Le Va. In her 20 years as a psychologist, she has served the community working for the Department of Justice and District Health Boards' community mental health services, working directly with at-risk individuals and supervising staff. Denise has led the design and development of two national suicide prevention programmes funded by the Ministry of Health- FLO: Pasifika for Life and LifeKeepers.

Emerge Aotearoa

Emerge Aotearoa is focused on providing community-based mental health, addiction, disability, offender rehabilitation, peer, housing and wellbeing services across the country. They are a national charitable trust that provides a wide range of health and social services. Their mission is to strengthen whānau so communities can thrive.

Materoa Mar, Board Chair



Materoa is of Ngati Whātua and Ngati Porou descent, and has been involved in Māori health, Whanau Ora and other areas of Māori Development for more than 30 years, in various roles.

She is currently Chief Executive for the Whānau Ora Alliance Te Tihi o Ruahine, based in the Mid Central region, Co-Chair for A Better Start Science Challenge and Chair for EMERGE Aotearoa Trust, and previously held numerous governance role in the New Zealand health system.

John Cook, Chief Executive



John has been a key member of the Emerge Aotearoa Group's leadership team since 2015. In his previous role as Chief Financial Officer, he led the Group's finance, information technology, procurement and administrative functions.

He also contributed to the ongoing development of each of the individual subsidiaries that operate within the Group. He was appointed Group Chief Executive in 2023. John is a Chartered Management Accountant,

Changing Minds

Changing Minds is a not-for-profit organisation, led and operated by people with lived experience with mental health and addiction. It works to collect, articulate and advocate for lived experience voices in health services, advocacy, human rights, and health policy.

Anne Bateman, Board Chair



Anne has worked in government, funding and leadership roles in mental health and addiction organisations and now runs her own consulting firm, specialising in NGO and government organisational and system development.

Kevin Harper, Chief Executive



Kevin is most recently known to the sector as Principal Advisor to the Lived Experience and Clinical Advisory Rōpu - Mental Health and Addiction at the Ministry of Health.

He has a wealth of expertise from the public sector and is widely regarded as a champion for the Lived Experience community in Aotearoa.

Yellow Brick Road | Te Wahapūahoaho

Yellow Brick Road provides support, knowledge and advocacy for whānau who have a loved one experiencing mental health challenges. Services include individual or group support sessions, programmes, advocacy and suicidal distress and postvention support.

Jacinda Cole, Board Chair



Jacinda has been involved with Yellow Brick Road since she returned from the UK in 2018 and was appointed to the Wairarapa Board of Supporting Families NZ (now known as Yellow Brick Road).

During her time in London she was appointed to the Governance Committees of Rethink Mental Illness, a UK charity focused on supporting people affected by mental illness.

Jacinda's desire to help those suffering from mental illness stems from seeing her brother battle with Schizophrenia and the devastating impact this had on her family.

John Moore, Chief Executive



John is a leader with many years' experience in the health sector, both in New Zealand and the United Kingdom. Mainly working with people experiencing mental illness, he had a lightbulb moment when he realised the power of family and whānau when travelling towards wellbeing.

Asian Family Services

Asian Family Services provide counselling, public health education and support for Asians in Aotearoa, New Zealand. Its services include a helpline, mental health, parenting and relationship advice as well as counselling services and awareness raising about gambling harm in Asian communities.

Fred Pau, Board Chair



Fred is a chartered accountant and an experienced Chief Financial Officer who has worked in the aged care and retirement village industry and manufacturing and trading environment. He has experience working for both corporate and charitable sectors.

Kelly Feng, Chief Executive



After becoming a qualified medical doctor in China, Kelly immigrated to New Zealand in 2002. Her medical background and subsequent registration as a social worker in New Zealand has given her a unique perspective and set of skills.

For over a decade she has made significant contributions to the mental health and addiction sector. Her passion for supporting the Asian community was recognised when she was made a Member of the New Zealand Order of Merit for services to health and Asian communities in 2021.

Wise Group

The Wise Trust is one of the largest providers of mental health, addiction and wellbeing services in New Zealand. The Trust oversees a group of charitable organisations collectively known as the Wise Group. Together they provide services and resources, drive research, and champion new thinking in the mental health and addiction space.

Julie Nelson, Board Chair



Julie Nelson is Wise Group Board Chair. Julie is a strong advocate for quality housing and effective wrap-around support services for our most vulnerable people.

Shelley Campbell, Chief Executive



Previously CEO of the Waikato/Bay of Plenty Cancer Society, Shelley has held roles as chief executive at Sir Peter Blake Trust and Waikato Primary Health.

Shelley's extensive background in the health sector saw her become a member of the New Zealand Health and Disability System Review Panel 2019-2020.

Aotearoa New Zealand Association of Social Workers (ANZASW)

ANZASW has over 3,800 members who work throughout the country in a variety of roles and organisations - from statutory social workers through to community social workers. The association develops, supports, and protects social workers. They also publish the online journal, Aotearoa New Zealand Social Work and publish summaries of recent research.

Sharyn Roberts, Board Chair



Sharyn Roberts is a registered social worker and is Manager of Contracts and Practice at Te Ora Hou Ōtautahi, a Kaupapa Māori Youth Development Organisation in Christchurch.

Sharyn's area of interest is Māori succeeding as Māori and she proudly leads the ANZASW Board and the Association at this exciting time of mandatory social work registration and social change.

Nathan Chong-Nee, Chief Executive



Nathan Chong-Nee is a Clinical Supervisor, Clinical Manager and Certified Coach and Consultant.

He is an Obama Asia-Pacific Leader and Young Pacific Leaders Initiative Alum and has more than 15 years' experience leading change in the social development sector across Samoa and New Zealand.

Occupational Therapy New Zealand (OTNZ)

OTNZ supports occupational therapist members to excel professionally and promote the occupation by providing resources, education and representation.

Christine Pacey, Council President



Renaldo Christians, Executive Director



Originally from South Africa and a former football coach, Renaldo has worked across government specialising in forming partnerships.

Health research

New Zealand Association of Clinical Research

The New Zealand Association of Clinical Research (NZACRes) is a professional association for clinical researchers. It was formed to foster and promote clinical research to improve public health in New Zealand. It is a non-profit scientific educational organisation run by volunteer officers selected from its membership.

Dr Megan McIlwain, President



Megan McIlwain is the President of NZACRes and a Clinical Research Manager at Merck Sharp & Dohme.

Aotearoa Clinical Trials

Aotearoa Clinical Trials (ACTT) is New Zealand's largest hospital-based research site network. It began over 20 years ago as Middlemore Clinical Trials. ACTT is an independent charitable trust that administers both commercial and grant-funded research on behalf of Te Whatu Ora.

Dr Edward Watson, Chief Executive



Dr Edward Watson is Chief Executive Officer of Aotearoa Clinical Trials (ACTT). A qualified physician, Dr Watson has worked in clinical trials for the last 23 years for organisations across New Zealand and Australia.

Liggins Institute

The Liggins Institute, a research institute at the University of Auckland, was established in 2001 by Professor Peter Gluckman among others, to create a centre for internationally recognised research in developmental biology. The Institute investigates the role of genes, early life events and the

nutritional environment, and uses this research to develop applications that can prevent, or better manage, non-communicable diseases.

Professor Justin O'Sullivan, Director



Professor Justin O'Sullivan was appointed Director in July 2023, replacing Professor Frank Bloomfield who had held the role since 2015. Professor O'Sullivan holds honorary appointments at the Garvan Institute of Medical Research, the University of Southampton and A+STAR Singapore Institute for Clinical Science.

The National Institute for Health Innovation

Supported by The University of Auckland and Auckland UniServices Ltd infrastructures, The National Institute for Health Innovation (NIHI) provides researchers with complex project management, IT, data management and analytics support, delivery of commercial health projects and commercialisation/deployment of health initiatives.

Vanessa Ding, General Manager



Vanessa Ding has been NIHI's General Manager since January 2022. She has a background in psychology and biology as well as wide-ranging leadership experience in product development, strategic sales, marketing and social enterprise. Before joining NIHI, she was head of development at Ignite Aotearoa, a mental health and wellbeing social enterprise run by Emerge Aotearoa, a national charitable trust.

Medical Research Institute of New Zealand

The Medical Research Institute of New Zealand (MRINZ) is an independent medical research institute. An internationally recognised academic institution, the MRINZ operates under a charitable trust pursuing advances in clinical practice and providing a base for specialist training in medical research. The MRINZ conduct collaborative research on crucial issues in global public health and development, while supporting and encouraging the next generation of world health leaders at undergraduate, post-graduate and professional levels.

Professor Richard Beasley, Director



Professor Richard Beasley is a renowned academic physician and researcher. He founded and is the current director of MRINZ. He was Professor and Head of the Department of Medicine at the Otago University Wellington School of Medicine from 1993 to 2001. In 2001 he established MRINZ, while continuing to work as an internal medicine physician at Wellington and Kenepuru Hospitals, retiring from clinical duties in 2021. He holds professorial appointments at the University of Southampton, UK, Victoria University of Wellington and the University of Otago.

Gillies McIndoe Research Institute

The Gillies McIndoe Research Institute is an internationally recognised research institute with world-class laboratories in Wellington. It focuses on finding better ways of treating cancer, vascular birthmarks (strawberry birthmarks), and fibrotic conditions. The Rt Hon John Key, officially opened the state-of-the-art Gillies McIndoe Research Institute facility in December 2013.

Dr Swee Tan, Chair



Dr Swee Tan is the founder and chairman of the board of the Gillies McIndoe Research Institute. Dr Tan has been involved with plastic surgery for 28 years of his 32-year medical career, as a practitioner and as a researcher. His research focuses on addressing disfiguring and life-threatening diseases by understanding the disease at the cellular and molecular level to develop novel treatments that provide better patient outcomes.

Research Office - University of Auckland

The Office of Research Strategy and Integrity (ORSI) supports the work of the Deputy and Associate Deputy Vice-Chancellor Research by enabling the delivery of the University's Research & Innovation strategic priorities.

Professor Frank Bloomfield, Deputy Vice-Chancellor



Professor Frank Bloomfield is the Deputy Vice Chancellor (Research) for the University of Auckland, taking up the role in March 2023. Prior to this, he was Director of the Liggins Institute, one of the university's Large Scale Research Institutes. He is a Professor in Neonatology, having worked clinically for many years as a Consultant Neonatologist at Auckland City Hospital. He has previously been President of the Perinatal Society of Australia and New Zealand and the Perinatal Society of New Zealand.

He is the co-lead for the Enhancing Aotearoa New Zealand Clinical Trials research project, funded by Ministry of Health.

Callaghan Innovation

Callaghan Innovation provides a range of innovation and research and development (R&D). More than 200 scientists and engineers – empower innovators by connecting people, opportunities and networks, and providing tailored technical solutions, skills and capability development programmes, and grants co-funding. It also works closely with government partners, Crown Research Institutes, and other organisations that help increase business investment in R&D and enhance the operation of New Zealand's innovation ecosystem. It operates across New Zealand from four urban offices and a regional partner network in a further 14 locations.

Hon Pete Hodgson, Chair



Callaghan Innovation is chaired by former Cabinet Minister Pete Hodgson (NZ Government 1999 –2008) whose portfolios included Science, Economic Development, Tertiary Education, Energy, Transport, Forestry, Fisheries, Climate change policy and Commerce. He serves on the Board of Otago Innovation - the University of Otago's technology transfer office. He was Chair of the Southern District Health Board until dissolution and is actively engaged with multiple aspects of the new Dunedin Hospital build.

Stefan Korn, Chief Executive



Stefan Korn was appointed Chief Executive in September 2022. Prior to joining the executive leadership team as Chief Product Officer in 2021, he was a member of the Callaghan Innovation Board for three years. In a prior role as CEO of Creative HQ, he led a team that launched accelerators for startups, government and corporates, inclusive innovation initiatives such as the Korero Mataranga (NZ's Education Summits), and international innovation training programmes.

Malaghan Institute of Medical Research

The Malaghan Institute is an independent biomedical research charity with a focus on breakthrough discoveries in immunology and immunotherapy. Based in Wellington, it has more than 140 researchers and support staff. It has collaborative relationships with tertiary institutions, Crown Research Institutes, hospitals and clinics here and internationally, to progress key areas of research.

In May 2022 the Health Research Council (HRC) announced funding for the Malaghan Institute of \$7.1M for two years to continue its biomedical research in cancer, asthma, allergy and microbiome research.

Professor Graham Le Gros, Director and Chief Executive



Professor Graham Le Gros has been the Chief Executive of the Malaghan Institute since 1994. In 2005 he was elected a Fellow of the Royal Society of New Zealand in recognition of his research contributions to the fields of immunology and asthma and in 2014 he was made a Companion of the New Zealand Order of Merit. He is a Professor in the School of Biological Sciences at Victoria University of Wellington. Graham oversees Vaccine Alliance Aotearoa New Zealand - Ohu Kaupare Huaketo in their work to help secure ongoing access to safe and effective COVID-19 vaccines for New Zealand.

Māori Health

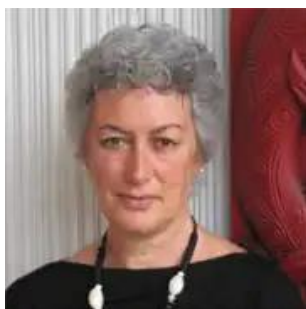
Tā Mason Durie, Emeritus Professor of Māori Research & Development, Massey University



For over 40 years, Tā Māson Durie has been at the forefront of a transformational approach to Māori health and has played major roles in building the Māori health workforce. His efforts have been recognised by the Royal Australian and New Zealand College of Psychiatrists, the Public Health Association of New Zealand, the Māori Medical Practitioners Association, the Thoracic Society of Australia and New Zealand, and the Polynesian Society.

Iwi Chairs Forum

Professor Margaret Mutu, Chair | Pou Tikanga



Professor Margaret Mutu is the Pou Tikanga, Chair, of the Iwi Chairs Forum. The Forum is a platform for sharing knowledge and information between Māori. Its members are leaders of iwi across the country.

Margeret Mutu is Professor of Māori Studies at the University of Auckland. She has taught Māori language and Treaty of Waitangi courses since 1986. She is a Fellow of the Royal Society of New Zealand elected in 2017. In addition to her role in the Iwi Chairs Forum, Professor Mutu holds many chairperson roles including of the Te Rūnanga-ā-Iwi o Ngāti Kahu (the council of representatives, or parliament, of the Ngāti Kahu iwi or nation), Ngāti Kahu's head claimant and chief negotiator for treaty claims settlements, and spokesperson to the media.

Dame Naida Glavish, Lead for the Hauora Iwi Leaders Group



Dame Naida Glavish is the Lead for the Hauora Iwi Leaders Group in the National Iwi Chairs Forum. She has been influential in addressing inequities and barriers for Māori in the health system, enhancing the diversity of the health workforce and is a passionate advocate of staff learning te reo Māori to improve health outcomes for Māori. Dame Naida was also instrumental in the signing of a Memorandum of Understanding between the Waitemātā and Auckland DHBs with Te Runanga o Ngāti Whātua in 2001 and has championed appropriate cultural support for Māori patients by developing bicultural and tikanga best practice policies, which were

implemented by other DHBs and some organisations in the private sector.

Te Rau Ora

In 2002, the then Associate Minister of Health Tariana Turia launched Te Rau Matatini. Te Rau Matatini originally based in Palmerston North established into a Trust with a significant representation of Māori leaders from the mental health and addiction sector. During this period, Te Rau Matatini broadened its reach across all of the health and disability sectors, still holding onto its passion for the mental health and addiction sector.

In 2019, Te Rau Matatini rebranded to Te Rau Ora. The shift recognised the growth in the organisation and its broader focus across Health and Wellbeing. The mission for Te Rau Ora is to transform the Māori Health Workforce to achieve their vision of Flourishing Whānau.

Donovan Clarke, Chairman



Donovan Clarke is the current Chairman of Te Rau Ora. Donovan is also the Chief Executive for Toitū te Waiora (Community, Health, Education and Social Services) Workforce Development Council – which represents industries including Care Services, Disability Services, Education and Educational Support Services, Funeral Services, Health Services, Public Order Safety, Regulatory Services, Skin and Nail Therapy Services, Social Services, and Urban Pest Control.

Hāpai te Hauora

Hāpai te Hauora has held the regional Māori public health contract for Tāmaki Makaurau for over 20 years. Their approach supports whānau and Māori community settings to achieve optimal health through policy development, submissions and campaigns driven from the flax roots up.

Jason Alexander, Interim Chief Executive Officer



Jason Alexander is the Interim Chief Executive Office for Hāpai. He has worked in Māori health for over 10 years and has a background in technology.

Te Kāhui Rongoā

Donna Kerridge, Chair



Donna Kerridge is an experienced rongoā practitioner and the Chair of Te Kāhui Rongoā. Te Kāhui Rongoā is a Trust dedicated to empowering tangata whenua in relation to access to and protection of rongoā (Māori medicine and health practices). The Trust has 20 elected trustees from across Aotearoa.

PROACTIVELY RELEASED

Pasifika Health

Sir Collin Tukuitonga, Associate Dean Pacific, Faculty of Health and Medical Sciences, University of Auckland



Sir Collin was formerly the Chief Executive of the Ministry of Pacific Island Affairs and was the Ministry of Health's Director of Public Health from 2001 to 2003. Sir Tukuitonga has also served with the WHO as Director-General, Secretariat of the Pacific Community, and is a member of the Public Health Advisory committee (PHAC). PHAC provides public health advice to the government and the Minister of Health. Sir Collin is also the chair the Pacific Expert Advisory Group. PEAG previously reported directly to the Associate Minister of Health (Pacific Peoples) and provide advice on Pacific health in Aotearoa New Zealand.

Dr Debbie Ryan, Principal, Pacific Perspectives



Dr Debbie Ryan is the Principal of Pacific Perspectives, a specialist policy and research agency that has helped co-ordinate numerous research reviews and initiatives on behalf of the Ministry of Health. She is a primary care physician who has held senior positions in community primary care and public service organisations and she has advocated for equity for Pacific people in Aotearoa New Zealand through her roles on Boards, Ministerial and Advisory Committees. Her research focus is to provide evidence for decision-makers at different levels, that can support policy change and the delivery of services that are culturally responsive and tailored to local contexts.

Dr Apisalome (Api) Talemaitoga, General Practitioner



Dr Talemaitoga is a practicing GP in Christchurch and Auckland. He also serves on a number of boards and committees and is Chair of the Pasifika GPs network and the Pacific Chapter of the Royal College of GPs. Dr Talemaitoga is a regular media commentator on Pacific health and wellbeing issues such as diabetes, respiratory conditions and heart disease. He has a large following and strong credibility and respect within and beyond New Zealand's Pasifika community.

Dr Kiki Maoate, Associate Dean Pacific, Paediatrics, University of Otago



Dr Maoate is a leading paediatric surgeon and urologist who pioneered keyhole surgery for children. He is one of the most senior and respected Pacific clinicians in New Zealand, with a similar level of standing as the late Dr Joe Williams throughout the Cook Islands and within New Zealand's Pacific Community. Dr Maoate is also President of the Pasifika Medical Association.

PROACTIVELY RELEASED

Key Health Advocates

Mike King, Key to Life Charitable Trust and I AM HOPE



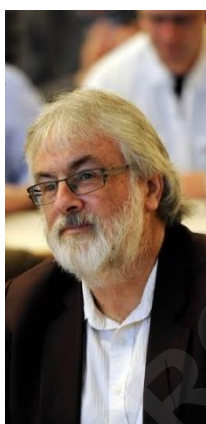
Mike King is a mental health advocate. He founded the Key to Life Charitable Trust in 2012. In 2019 he developed a social media campaign for mental health awareness as well as Gumboot Friday to raise money to help young people access counselling.

Rob Campbell, Former Te Whatu Ora Board Chair



Rob Campbell is a prominent spokesperson on health and other social issues in New Zealand. He was Board Chair of Te Whatu Ora from September 2021 until 28 February 2023.

Ian Powell, former Executive Director of the Association of Salaried Medical Specialists



Ian Powell was the Executive Director of the Association of Salaried Medical Specialists, the union representing senior doctors and dentists in New Zealand, for more than 30 years until December 2019. He is now the editor of the health systems blog 'Otaihanga Second Opinion', a regular columnist for *New Zealand Doctor* and occasional columnist for the *Sunday Star Times*.

Asthma and Respiratory Foundation NZ

The Asthma and Respiratory Foundation NZ are strong advocates for tighter controls around vaping in New Zealand.

Letitia Harding, Chief Executive



Letitia has over 25 years extensive experience in the health sector, which includes the introduction of new health technologies, improving access to medicines, initiating imaging and diagnostic trials and establishing international healthcare networks. Letitia was the recipient of the 2023 President's Award by the Thoracic Society of Australia and New Zealand's (TSANZ) for her advocacy and education around the dangers of vaping.

Action on Smoking for Health (ASH)

ASH – Action for Smokefree 2025 is an incorporated society that has been campaigning since 1983 to achieve the vision to eliminate the death and harm caused by tobacco. ASH advocate for less restrictions around vaping to ensure it is a readily available quit tool for smokers.

Emeritus Professor Robert Beaglehole, Chair



Independent global public health practitioner, Robert Beaglehole trained in medicine, epidemiology and public health in New Zealand, England and the USA before becoming a public health physician. He was Professor of Community Health at the University of Auckland, New Zealand (1988-1999). He joined the staff of the World Health Organization in 2000 and between 2004 and 2007 directed the Department of Chronic Disease and Health Promotion. He left WHO in February 2007 having reached the UN retirement age and returned to New Zealand. He is now an independent global public health practitioner with a focus on the prevention and control of noncommunicable diseases.

Immunisation Advisory Centre

IMAC was formed in 1997 and advocates for immunisation services to be incorporated in preventative healthcare, across health, education and social services sectors to protect New Zealanders from vaccine preventable diseases. They also provide services such as training.

Loretta Roberts, National Director



Loretta Roberts is the National Director of the Immunisation Advisory Centre (IMAC). She has worked with IMAC for the past 20 years.

Loretta has an extensive background in nursing, education, and maternal-child health, having practiced across a number of locations in Asia, the Pacific Islands, and Aotearoa, New Zealand.

Professor Michael Baker, Director, Public Health Communication Centre (PHCC)



Michael is a public health physician and Professor in the Department of Public Health at the University of Otago. Michael is a member of the Ministry of Health's Covid-19 Technical Advisory Group and was an advocate for the Covid-19 elimination strategy. He established a programme of research on the epidemiology, prevention and control of Covid-19 in NZ and internationally. He established the PHCC in February 2023 to increase the reach and impact of public health research, making it more accessible to the public and decision-makers.

Professor Michael Plank, Professor in the School of Mathematics and Statistics at the University of Canterbury



Professor Plank led a group of researchers commissioned by the New Zealand Government to deliver mathematical modelling of Covid-19 in support of the pandemic response.

Rachel Smalley, The Medicine Gap



Rachel Smalley is a journalist and strategic communications consultant, and the founder of *The Medicine Gap*, a group of New Zealanders who believe the Government must improve access to medicines.

Rachel Smalley is a prominent advocate in relation to access to medicines in New Zealand. Advocates for a Medicines Strategy and for more funding for Pharmac for Medsafe approved medicines on the waitlist.

Dr Phil Bagshaw, Canterbury Charity Hospital Trust

The Canterbury Charity Hospital Trust was established in 2007 and provides specialist health care services people in Canterbury who have health care needs that they cannot access through the public health system and cannot afford private health care.



Phil Bagshaw helped establish the Canterbury Charity Hospital and chairs its Trust. He has been appointed to the Canterbury District Health Board and several Ministry of Health committees and has chaired the New Zealand branch of the Royal Australasian College of Surgeons and the Council of Medical Colleges in New Zealand. He helped found the Academy of Endosurgery Trust and organised two international laparoscopic-surgery conferences. He helped initiate the internationally recognised Laparoscopic Colorectal Cancer Study. He chaired the Scientific Assessing Committee for the Canterbury Medical Research Foundation. Mr Bagshaw was President of the New Zealand Society of Gastroenterology and chaired the New Zealand Liver Transplant Advisory Group for 15 years.

Mesh Down Under

Mesh Down Under are an advocacy group who support New Zealanders who have been harmed by surgical mesh. In 2019, the Ministry of Health, Mesh Down Under and Te Ngāpara Centre for Restorative Practice co-designed a restorative approach to surgical mesh harm, which aimed to restore wellbeing, relationships, and trust. They are also part of a government working group, The Mesh Roundtable, chaired by the Ministry of Health, with representatives from three medical colleges, ACC, HDC, the Private Health Association, and Medsafe.

Melissa Vining, Patient advocate

Melissa and her late husband Blair campaigned during the final months of his life to improve cancer treatment in New Zealand.



The New Zealand Initiative

Think tank that advocates changes relating to topical issues, including health.

Emeritus Professor Des Gorman



Emeritus Professor Des Gorman (Ngāti Kuri and Ngāpuhi) is an Emeritus Professor of Medicine in the Faculty of Medical and Health Sciences at the University of Auckland. From 2005 to 2010, he was the Head of the University's School of Medicine. He has a BSc, MBChB and MD degrees from the University of Auckland, as well as a PhD from the University of Sydney. Professor Gorman's non-clinical interests include health system design and funding, and health workforce planning and development.

Sir Ashley Bloomfield, Director Public Policy Impact Institute

The Public Policy Impact Institute was established by the University of Auckland to strengthen and enhance the impact of the University's research and wider work in Auckland, New Zealand, the Pacific and globally. The Institute will work with groups and partners including communities, industry and private sector, local and central government, philanthropic organisations, and other academic institutions. The activities of the PPII will include research, service work, 'think tank' and innovation, research dissemination, and opportunities for researchers, communities and policy makers to regularly interact.



Sir Ashley joined the University of Auckland in 2023 as a Professor in the School of Public Health and Director of the Public Policy Impact Institute. Sir Ashley Bloomfield trained in medicine at the University of Auckland and specialised in public health medicine. He has 25 years' experience in public policy and health leadership, including at the World Health Organization in Geneva. Sir Ashley was New Zealand's Director-General of Health from June 2018 to July 2022 and led the country's health response to the COVID-19 pandemic. He was appointed a Knight Companion of the New Zealand Order of Merit (KNZM) in the 2023 New Year's Honours for services to public health. Sir Ashley's professional areas of interest are non-communicable disease prevention and control and addressing health inequities.

Carers NZ and Carers Alliance

Established in the early 1990s by and for family carers, Carers NZ acts as the national peak body providing information, advice, learning and support. It supports a network of approximately 490,000 individual carers and supporting organisations.

Laurie Hilsgen, Carers New Zealand CEO and Alliance Secretariat



Rare Disorders New Zealand

Rare Disorders New Zealand is the umbrella group for rare disorders in New Zealand and advocates for an equitable healthcare system that works for the 300,000 Kiwis with a rare condition. It is made up of more than 140 disorder-specific support groups. The Ministry has worked closely with RDNZ to develop a Rare Disorders Strategy.

James McGoram, Chair



James is a digital designer and online business consultant with a wide range of experience in governance roles.

Chris Higgins, Chief Executive



Chris began his career as a health services researcher and his background since then includes senior management roles with the Northland, Waikato and Lakes health boards, and leadership roles in a variety of community, not for profit and advocacy organisations, including Presbyterian Support (Northern), Spectrum Care, Brain Injury Auckland, Muscular Dystrophy NZ and New Zealanders for Health Research.

Industry bodies

Natural Health Products New Zealand

Natural Health Products NZ is the industry body for New Zealand's natural health and complementary products sector, representing the industry's interests locally and abroad.

Samantha Gray, Government Affairs Director

Samantha Gray is also the Managing Director of BioEquitas.



Medicines New Zealand

Medicines New Zealand is the industry group representing biopharmaceutical companies operating in New Zealand. It advocates for the benefits of modern medicines and vaccines as part of a high-quality public health system.

Graeme Jarvis, Chief Executive Officer

Graeme Jarvis has been CEO since January 2015.



Medical Technology Association of New Zealand

Medical Technology Association of New Zealand (MTANZ) is the industry body representing medical technology manufacturers, importers, exporters and distributors of medical devices in New Zealand.

Cushla Smyth, Chief Executive Officer

Cushla Smyth has been CEO since June 2021.



PROACTIVELY RELEASED